

UC Health Pharmacy Newsletter

UNIVERSITY
OF
CALIFORNIA
HEALTH



IN THIS ISSUE

**UC VALUE AND IMPACT
SCHOLARSHIP WINNERS**

**SPECIALTY PHARMACY
DASHBOARDS**

**A BIGGER LOOK AT
SUGAMMADEX USING THE
UCHDW**

**RESEARCH USING THE
UCHDW**

UPDATES FROM UCOP

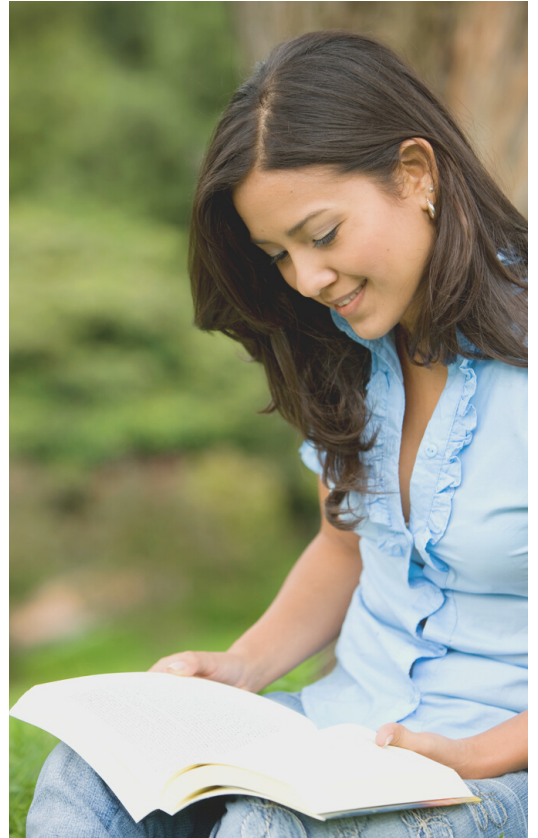
The UCOP Health pharmacy team is made up of pharmacists and pharmacy technicians who cover various aspects of pharmacy, including purchasing, 340B, ambulatory care, acute care, and specialty pharmacy.

As part of our work, our team keeps track external forces at work in pharmacy, such as the recent SCOTUS ruling and subsequent CMS proposed rule for 340B pharmacies, changes to our insurance plans to improve employee access, and updates from professional societies, along following pharmacy related bills in both the California and US legislature.

Our team also works closely with the five UC academic medical centers (AMCs) to coordinate system-wide contracts for services and products, such as IPD, ABC, 340B, purchasing, and specialty medication-related contracts. If you have an idea about a best practice or a product/service that could be spread to our sister AMCs, let us know!

UC VALUE AND IMPACT SCHOLARSHIP RECIPIENTS ANNOUNCED

UC Value and Impact Scholarship was created this year by the Pharmacy Chiefs to “improve efficiency, decrease medication costs, improve patient safety, and/or improve the quality of pharmacy services” across the UC System. The winning group receives \$1000 towards the project supplies and/or travel expenses for presenting their project either at the UC Pharmacy Collaborative Conference (UCPCC) or at a conference of their choice. As part of the expectation of the scholarship, the winning group will share the results of their project at the May 2024 UCPCC.

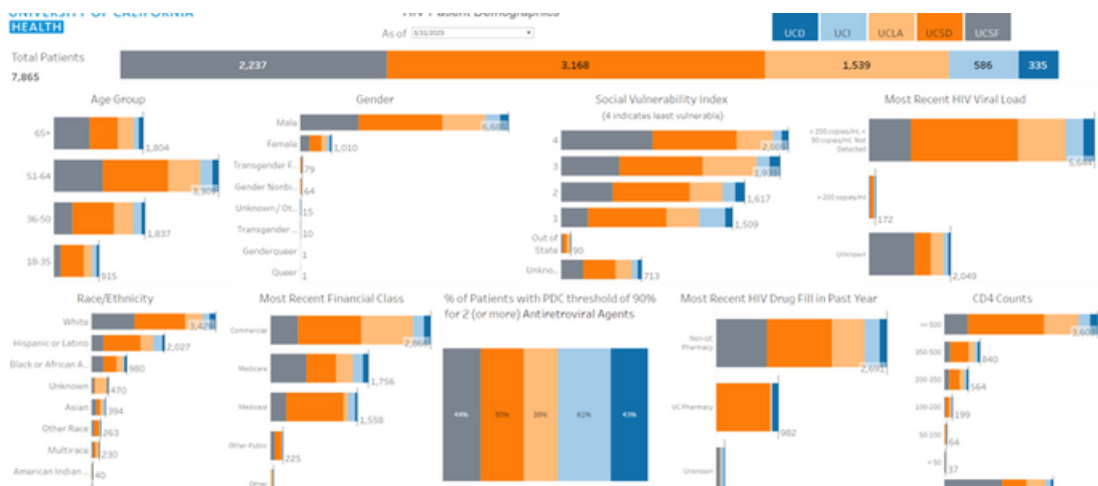


This year's winners are Primary Investigator Jaekyu Shin at UCSF, along with his team Tiffany Pon from UCD, Jennifer Namba and Andrew Willeford from UCSD, Christina Cadiz from UCI, Louise T. Wang from UCLA and Yvette Heller from UCSF. Their project titled “GDMT (guideline directed medical therapy) at Discharge and Heart Failure Rehospitalization” hopes to compare the risk of rehospitalization between HF patients by the number of GDMT medications they are on at discharge. This project met the criteria of the scholarship rubric, included all 5 UC Pharmacy departments, and was unanimously voted on by the Chiefs to win this year's award. Please stay tuned next May at the UC Pharmacy Collaborative Conference for the results of their ground-breaking research and join me in congratulating them on their achievement! Future UC Value and Impact Scholarship opportunities will be announced in the coming months.

SPECIALTY PHARMACY DASHBOARDS

The UC Specialty Pharmacy (SP) PCT has worked to develop various clinical and operational dashboards within the UCH Data Warehouse ([UCHDW](#)) in collaboration with the [Center for Data-driven Insights and Innovations \(CDI2\)](#) team. In an environment where specialty pharmacists are becoming more integral in the patient care process, such dashboards can improve clinical care outcomes for patients through quality improvement initiatives and identify social determinants of health (SDOH) that impact access to, and therapeutic outcomes from, treatment with specialty medications. To start, the UC SP PCT has developed dashboards focused on clinical outcomes in HIV and Rheumatology.

For example, the HIV dashboard can ensure patients with CD4 count less than 200 cell/mm³ are receiving appropriate PJP prophylaxis. The rheumatoid arthritis dashboard allows pharmacists to filter for patients with high disease severity, as measured by the RAPID3 score, for assessment of appropriate treatment regimen and intervention. Validation and development of the HIV and Rheumatoid Arthritis dashboards are ongoing processes to ensure accuracy and thoughtful use of the information gathered across the UCs. The UC SP PCT plans to further develop clinical outcomes dashboards in multiple disease states to represent the impact in quality care when patients receive their specialty medications from a health system owned specialty pharmacy (HSSP), specifically our UC SPs.

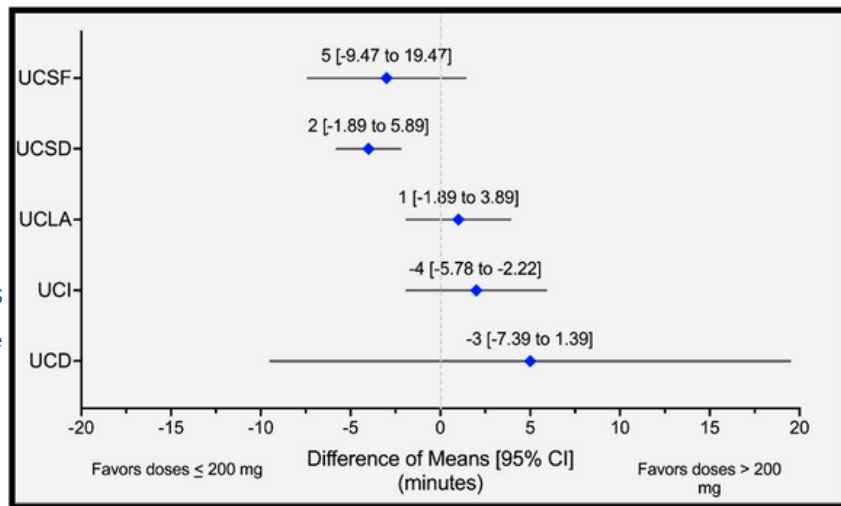


The UC SP PCT also developed a Specialty Pharmacy Metric KPI Dashboard which represents certain metrics necessary for Utilization Review Accreditation Commission (URAC) specialty pharmacy accreditation. It is also nearly complete with a Specialty Drug Explorer dashboard. To find out more about these dashboards, contact kanika.chandra@ucop.edu.

A BIGGER LOOK AT SUGAMMADEX

Sugammadex (Bridion®) is an agent used to reverse the effects of neuromuscular blocking effects of rocuronium and vecuronium and aid in post-operative respiratory recovery. While each 200 mg vial is not overtly expensive at \$148, its frequent utilization makes it a high impact medication for UC academic medical centers (AMCs). In Fall 2022, a group of pharmacists, pharmacy residents, and [CDI2](#) analysts worked together to compile UC AMC sugammadex utilization into a dashboard in the [UCHDW](#). Over 141,000 operating room cases with sugammadex use were compiled. The primary question: is there a difference in post-anesthesia care unit (PACU) recovery time between sugammadex doses ≤ 200 mg or >200 mg?

Secondarily, the group analyzed PACU recovery time and respiratory complications. No difference was seen in PACU recovery time with either dose. Additionally, less respiratory complications were noted in patients who received ≤ 200 mg. The result of this study provides a potential cost-effective sugammadex stewardship strategy that results in similar efficacy and safety outcomes.



RESEARCH USING THE UC HEALTH DATA WAREHOUSE

Pagan Morris, MPH, Director of Research Initiatives at [CDI2](#) presented an overview of UC Health data and resources at the July 12, 2023 PCT Leads/Co-Leads/Secretaries meeting. Ms. Morris described the clinical data within [UCHDW](#) and described the UC Health Real World Evidence (RWE) Collaborative, which serves as a platform for UC Health leaders to share knowledge and best practices, foster partnerships with external stakeholders, conduct research and analysis, and promote education and training programs that advance the use of real-world evidence in healthcare. She also discussed the UC Health Data Discovery Platform (UCDDP) which is a secure, cloud-based data science environment that supports systemwide research efforts. Click [here](#) to access Ms. Morris's presentation. Any questions on using the [UCHDW](#) for research can be directed to healthdata@ucop.edu.

SHAREPOINT UPDATES: MOVING TO SHAREPOINT ONLINE (SPO)

UCOP is moving from SharePoint on-premises to SharePoint Online (SPO). UC Health, a subdivision of UCOP, began planning it's part of the move in late June. Pharmacy Collaborative Team members will be periodically asked to validate aspects of the move. The official migration date is 9/24/2023. To ensure no data is lost, all items from our SharePoint will be backed up to a secondary drive on 9/21/23. Therefore, between 9/21/23 to 9/25/23, there will be a moratorium on any new files or file updates to SharePoint site for all activities. Additionally, following the migration to SharePoint Online, each site will be transitioned from SharePoint Classic to SharePoint Modern. Please be on the lookout for a SharePoint Classic to SharePoint Modern schedule.

Phase	Planning Starts	Planning Ends	Validation Starts	Validation Ends	Moves to Production	Hypercare Starts	Hypercare Ends
Group1	3/28/23	4/14/23	4/17/23	5/5/23	8/13/23	8/14/23	8/25/23
Group2	5/9/23	5/30/23	5/31/23	6/21/23	9/03/23	9/05/23	9/18/23
Group3	6/23/23	7/14/23	7/17/23	8/4/23	9/24/23	9/25/23	10/06/23

PHARMACY COLLABORATIVE TEAM OVERVIEW

UC Health Chief Pharmacy Executives and Officers have met informally for many years to network and share administrative challenges and successes. However, clinical and operational pharmacy stewardship efforts were rarely highlighted among this group due to limited representation of non-executive pharmacists, pharmacy technicians, and other pharmacy staff. In 2012, two pharmacy teams, Pharmacy and Therapeutics and Ambulatory Care, began meeting regularly and sought to formalize the collaborative relationship at the pharmacist/clinical specialist level among the sites. Over the next 10 years, many more teams formed including Purchasing, Transitions of Care, Critical Care, Controlled Substances, 340B, Oncology, and more.

In 2022, UC Health sought to formalize the Pharmacy Collaborative Team (PCT) structure to facilitate implementation of best practices, medication use evaluations, protocols, and other tools to improve patient care, reduce overall medication costs, and optimize revenue. An overarching PCT charter was developed to clearly define a PCT mission statement, goals and objectives, and detail leader and member responsibilities. A central web-based platform, SharePoint, was created for PCT workflow and information sharing.

Importantly, PCT leadership is shared among individual leaders among the UC academic medical centers (AMCs), so that team meeting topics and projects emphasize the needs of the AMCs. UC Health Clinical Pharmacy liaisons assist PCT leadership with collaborative functions including setting agendas and running meeting and with obtaining data needed to support collaborative projects. They also provide quarterly updates to CPO/CPEs on PCT meeting 'happenings', attend UC Collab meeting, and train incoming collab leadership in software used for PCT performance.

WANT TO GET MORE INVOLVED?

If you would like to get more information about work described in this newsletter, or would like to become more involved, you can visit our SharePoint site where you can find information on all the PCT projects, etc. The site is open to all UC Pharmacy employees, and just requires a brief set up process to access. Once you have access to the site, there are a variety of resources for pharmacy members including AMC pharmacy org charts, contact information for all PCT members, a list of all PCT projects, and more. Importantly, all PCT subpages are open to all, so you can see the collaborative PCT work. Please contact Julianna Burton at julianna.burton@ucop.edu for further information.