



2021 ILLINOIS
CRASH FACTS

& STATISTICS



Illinois Department
of Transportation

One fatal traffic accident? That's one too many. At the Illinois Department of Transportation, we're working hard every day to make zero fatalities a reality and ensure the safety of travelers throughout the state.

To further this mission, we publish Illinois Crash Facts & Statistics each year. The 2021 report offers an in-depth examination of driver behavior that helps us better understand when, where and why crashes occur. This data is essential to improving our efforts to prevent injuries and fatalities on our roads. We study and share this information with the goal of ending crash fatalities for good.

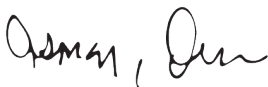
In 2021, there were 1,217 fatal crashes on Illinois roads resulting in 1,341 deaths. This represents a 12.2% increase in traffic-related deaths from 2020. We also saw an increase in the number of total crashes and injuries at 19.8% and 17.0%, respectively. As these numbers increase, so too does our commitment to bring them to zero.

To bolster our engineering and programming efforts, IDOT leads a host of statewide programs to spread messages of safe driving behavior. Programs such as "Start Seeing Motorcycles," "Click It or Ticket" and "Drive Sober or Get Pulled Over" are just a few of our longstanding initiatives to regularly remind the public of the commonsense measures they can take to travel safely. Our new "It's Not a Game" multimedia safety campaign drives home the message that there are no extra lives, no respawns and no second chances to get it right when you are behind the wheel.

Perhaps most importantly, Gov. JB Pritzker's Rebuild Illinois is revitalizing our transportation system. The largest capital program in state history, Rebuild Illinois will invest a total of \$33.2 billion across all modes of transportation. These improvements will modernize our infrastructure and improve safety for all.

As you travel throughout our great state, I urge you to do what you can to protect yourself and others. Together, we'll reach our goal of zero fatalities.

Sincerely,



Omer M. Osman, P.E. Secretary

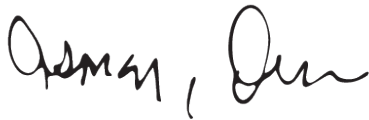
A Message From Secretary Osman



Omer M. Osman, P.E. Secretary

2021 Illinois Crash Facts & Statistics

The Illinois Department of Transportation's Office of Planning and Programming, Bureau of Data Collection, extends its appreciation to local, county and state law enforcement agencies for their assistance in investigating and reporting traffic crashes and to county coroners and the medical examiner of Cook County for providing pertinent information. Without their efforts and cooperation, this publication would not have been possible.



Omer M. Osman, P.E.
Secretary

Compiled by: Illinois Department of Transportation
Office of Planning and Programming
Bureau of Data Collection
Crash Information Staff
Crash Records Staff

IMPORTANT NOTES

2009 Crash Data

The law regarding the reporting threshold for property-damage-only crashes was amended, effective Jan. 1, 2009, as follows:

When all drivers involved in a crash are insured, the amount of damage to any one person's property that must be reported increased from \$500 to \$1,500. If any driver does not have insurance, the threshold remains at \$500. The change did not affect the reporting of injury crashes or fatal crashes.

The noticeable decline in property-damage crashes may have been influenced by IDOT's safety efforts; however, part of the decline is attributable to this change in the crash reporting threshold.

There were 83,914 crashes reported in 2021 for which damage to any one person's property totaled between \$501 and \$1,500.

Table of Contents

| | |
|--|----|
| Key Terms | 7 |
| Crash Data Overview | 9 |
| Illinois' Highway Safety Clock | 10 |
| Crashes by Day of Week and Time of Day | 11 |
| Fatal Crashes by Day of Week and Time of Day | 12 |
| A-Injury Crashes by Day of Week and Time of Day | 13 |
| Crashes by Type of Road | 14 |
| Crashes by Type of Collision | 16 |
| Work Zone Crashes | 17 |
| Large Trucks Involved in Work Zone Crashes by Crash Severity | 18 |
| Fatal Work Zone Crashes by Time of Day and Day of Week | 18 |
| Deer Crashes | 19 |
| Pedestrian and Pedalcycle Crashes | 20 |
| Train Crashes | 21 |
| County Motor Vehicle Crash Statistics | 22 |
| Person Data Overview | 25 |
| Illinois Fatalities and Vehicle Miles Traveled 2001-2020 | 26 |
| Drivers Involved in Crashes by Age and Crash Severity | 27 |
| Drivers Involved in Fatal Crashes by Age and Location | 28 |

2021 Illinois Crash Facts & Statistics

Table of Contents

| | |
|--|----|
| Injuries by Person Type, Age and Gender | 29 |
| A-Injuries by Person Type, Age and Gender | 30 |
| Fatalities by Person Type, Age and Gender | 31 |
| Teen (16-19 Years Old) Fatalities by Age and Person Type | 32 |
| Pedestrian | 33 |
| Pedalcyclist | 34 |
| Motorcyclist | 35 |
| Occupant Restraint Usage for People Killed and Injured | 36 |
| Alcohol-Related Fatal Crashes Data Overview | 38 |
| Drivers Killed by Age and BAC | 39 |
| Fatal Alcohol-Related Crashes by Time of Day and Day of Week | 39 |
| Fatal Crashes During the Holidays | 40 |
| Pedestrians and Pedalcyclists Killed by Age and BAC | 41 |
| Vehicle Data Overview | 43 |
| Registered Motor Vehides by Type | 44 |
| Motor Vehicles Involved in Crashes | 44 |
| Tractor-Trailer Crashes | 45 |
| School Bus Crashes | 46 |
| Motorcycle Crashes | 47 |

Key Terms

BLOOD ALCOHOL CONCENTRATION (BAC)

On July 2, 1997, a BAC of 0.08 or greater became the level at which a driver is considered legally intoxicated in Illinois. Prior to July 2, 1997, the level was 0.10.

CRASH

An occurrence that takes place on public roadways, involves a moving motor vehicle and produces death, injury or damage in excess of \$1,500 to any one person's property when all drivers in the crash are insured. If any driver does not have insurance, the threshold is \$500. (The change in threshold took effect on Jan. 1, 2009.)

DRIVER

An occupant who is in actual physical control of a motor vehicle or, for an out-of-control vehicle, an occupant who was in control until control was lost. When the term driver is used, it includes drivers of all types of motor vehicles, including cars, vans, pickup trucks, motorcycles, tractor-trailers, emergency vehicles and buses.

FATALITY VS. FATAL CRASH

A fatality is a death that results from a traffic crash. A fatal crash is a motor vehicle crash (single or multiple) that results in the death of one or more people.

INJURY CRASH

Any motor vehicle crash that results in one or more non-fatal injuries.

A-INJURY (incapacitating injury)

Any injury, other than a fatal injury, that prevents the injured person from walking, driving or normally continuing the activities he/she was capable of performing before the injury occurred. Includes severe lacerations, broken limbs, skull or chest injuries, and abdominal injuries.

B-INJURY (non-incapacitating injury)

Any injury, other than a fatal or incapacitating injury, that is evident to observers at the scene of the crash. Includes a lump on the head, abrasions, bruises, and minor lacerations.

C-INJURY (possible injury)

Any injury reported or claimed that is not either an "A," "B" or fatal injury. Includes momentary unconsciousness, claims of injuries not evident, limping, complaints of pain, nausea, and hysteria.

LOCATION (URBAN)

Includes location in or adjacent to a municipality or other urban area with a population greater than 5,000.

LOCATION (RURAL)

Includes all locations not classified as urban.

MILEAGE DEATH RATE

Fatalities per 100 million vehicle miles of travel.

MOTORCYCLIST

Any occupant, either operator (driver) or passenger, of a motorcycle.

PEDALCYCLIST

Any occupant of a non-motorized vehicle that is propelled by pedaling. Includes bicycles, unicycles and tricycles.

PEDESTRIAN

Any person who is not in or on a vehicle.

TRACTOR-TRAILER

Alternative term for semi-truck.

TRAVEL

Vehicle miles driven.

WORK ZONE CRASHES

A motor vehicle traffic crash in which the first harmful event occurs within the boundaries of a work zone or an approach to or exit from a work zone, resulting from an activity, behavior or control related to the movement of the traffic units through the work zone. (For a full definition of a work zone, see page 17.)

Crash Data

The motor vehicle crash data referenced in this section reflect crashes. The data do not reflect people involved in these crashes, unless otherwise specified.

Crash Data Overview

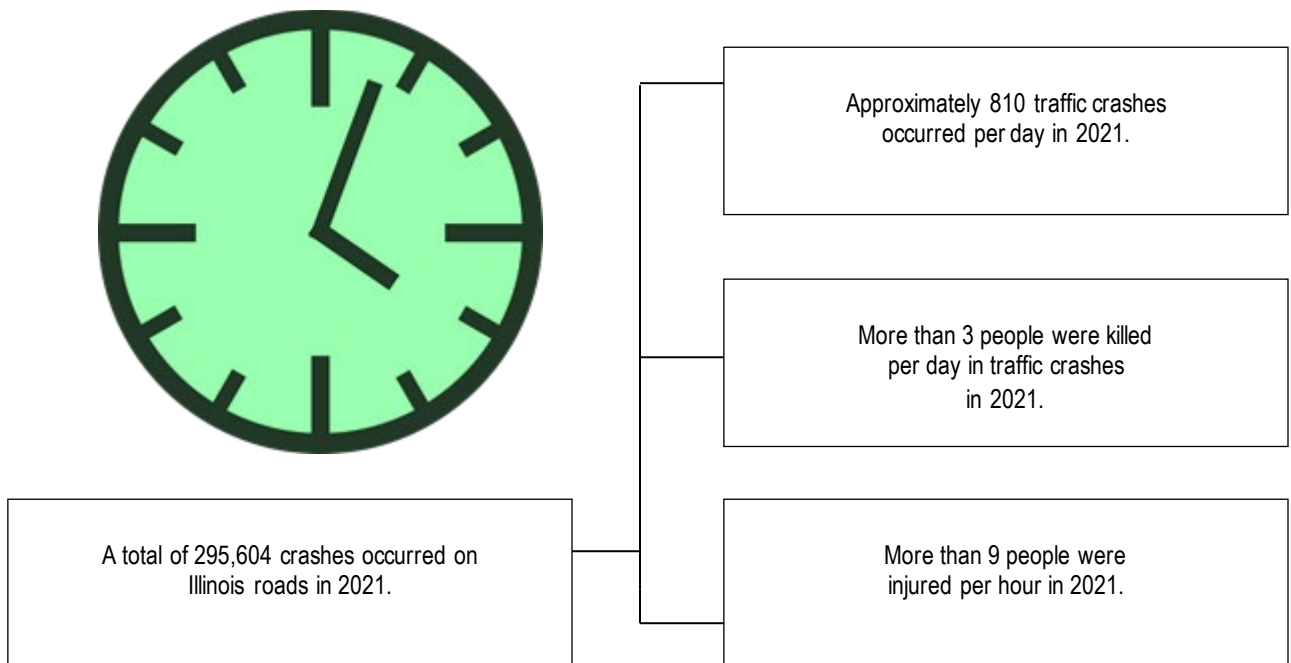
- ✚ In 2021, there were 295,604 crashes involving motor vehicles in Illinois. Injury crashes accounted for 20.6% of these crashes (60,991), while fatal crashes (1,217) accounted for less than 1.0% of these crashes.
- ✚ Crashes involving an A-injury accounted for 12.4% of injury crashes.
- ✚ Crashes involving pedestrians accounted for 1.3% of total crashes, 17.5% of fatal crashes and 5.6% of injury crashes.
- ✚ Crashes involving pedalcyclists accounted for less than 1.0% of total crashes, 3.0% of fatal crashes and 3.5% of injury crashes.
- ✚ Crashes involving speed accounted for 31.9% of total crashes, 44.4% of fatal crashes and 36.9% of injury crashes.
- ✚ Crashes involving motorcycles accounted for 1.1% of total crashes, 13.8% of fatal crashes and 3.9% of injury crashes.
- ✚ Crashes involving tractor-trailers accounted for 3.8% of total crashes, 8.5% of fatal crashes and 3.0% of injury crashes.
- ✚ Crashes occurring in work zones accounted for 2.2% of total crashes, 1.6% of fatal crashes and 1.8% of injury crashes.
- ✚ Crashes involving deer accounted for 4.9% of total crashes.
- ✚ There was an average of 1.1 deaths per fatal crash.
- ✚ 83.6% of fatal crashes occurred on dry roads.
- ✚ 43.8% of fatal crashes occurred during daylight hours.

2021 Illinois Crash Facts & Statistics

| | |
|---|------------|
| Registered Motor Vehicles* | 11,179,214 |
| Licensed Drivers* | 8,908,402 |
| Vehicle Miles Traveled (Billions) | 102.22 |
| Total Crashes | 295,604 |
| Total Injuries | 85,398 |
| A-Injuries | 9,417 |
| Total Deaths | 1,341 |
| Mileage Death Rate (Per Hundred Million Vehicle Miles Traveled) | 1.3 |

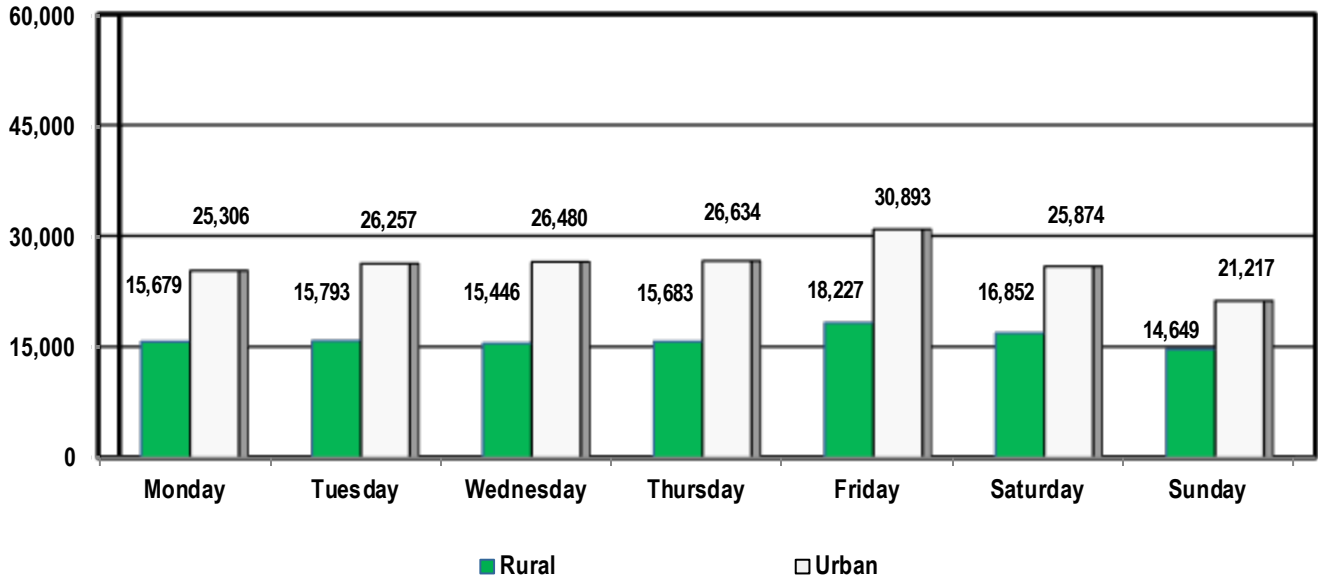
*Source: Illinois Secretary of State's office.

Illinois' Highway Safety Clock



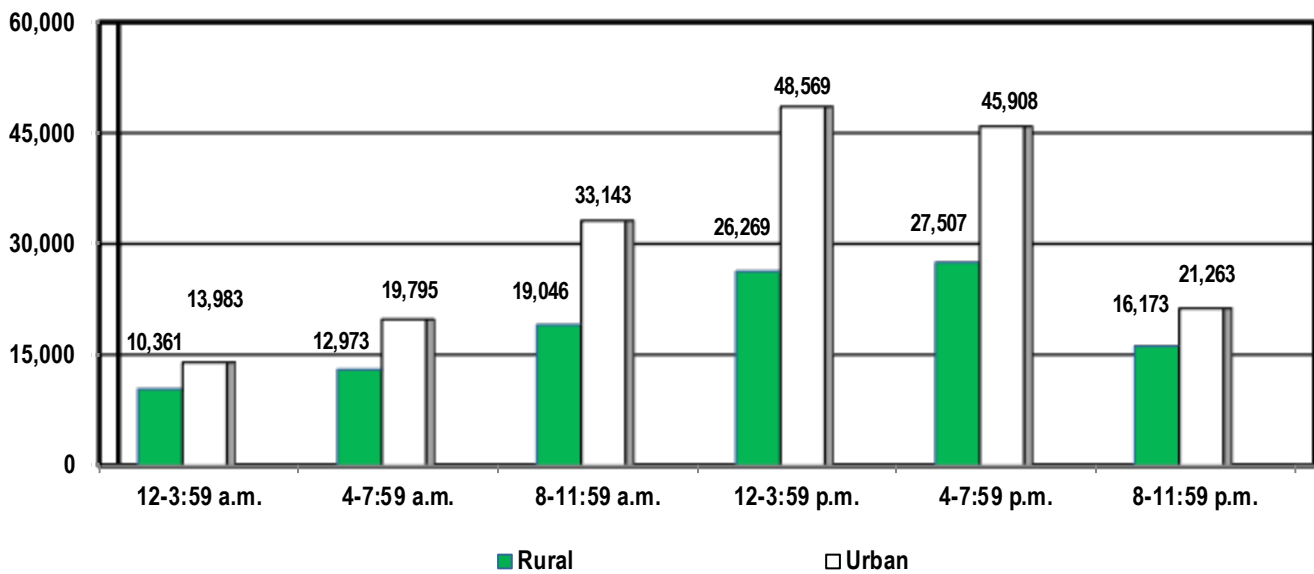
2021 Illinois Crash Facts & Statistics

Crashes by Day of Week



A total of 614 crashes occurred in an unknown location. The greatest number of crashes occurred on Fridays with 30,893 crashes in urban locations and 18,227 crashes in rural locations.

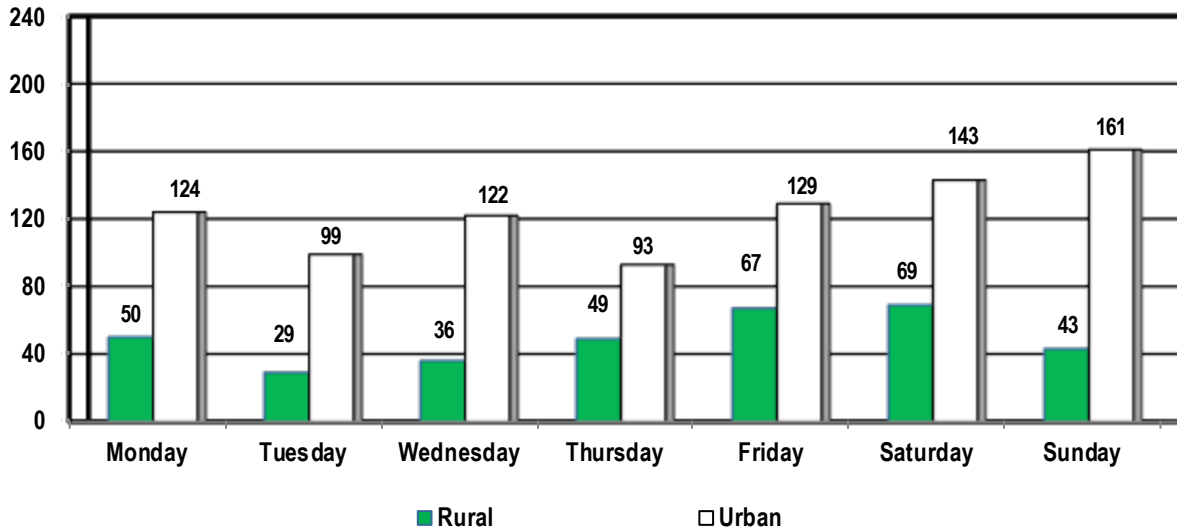
Crashes by Time of Day



A total of 614 crashes occurred in an unknown location. More than 67.9% of all crashes occurred between 8 a.m. and 7:59 p.m. Of these crashes, 63.5% occurred on urban roads.

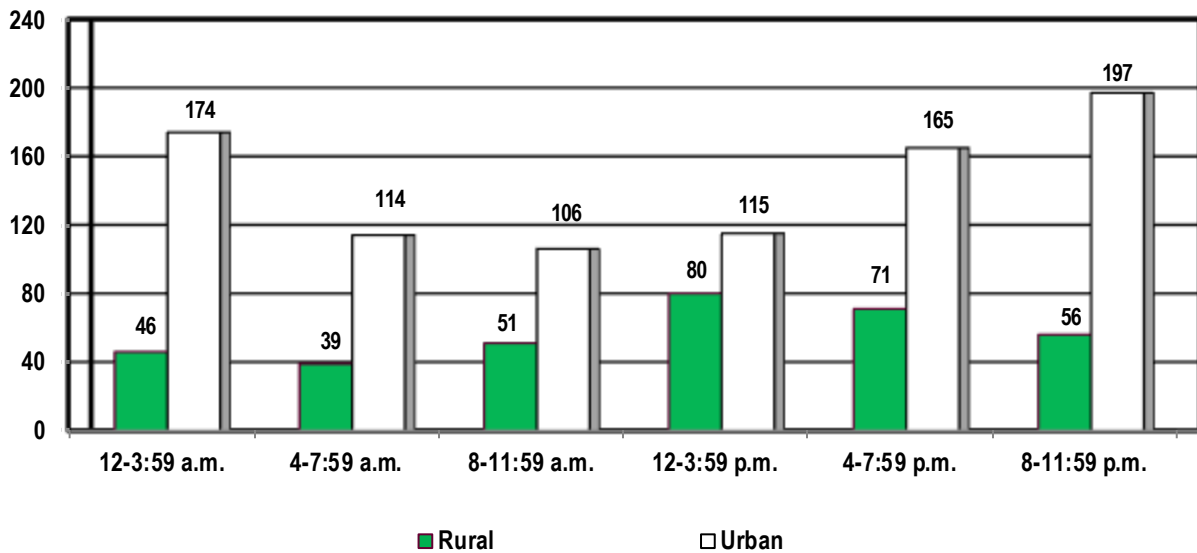
2021 Illinois Crash Facts & Statistics

Fatal Crashes by Day of Week



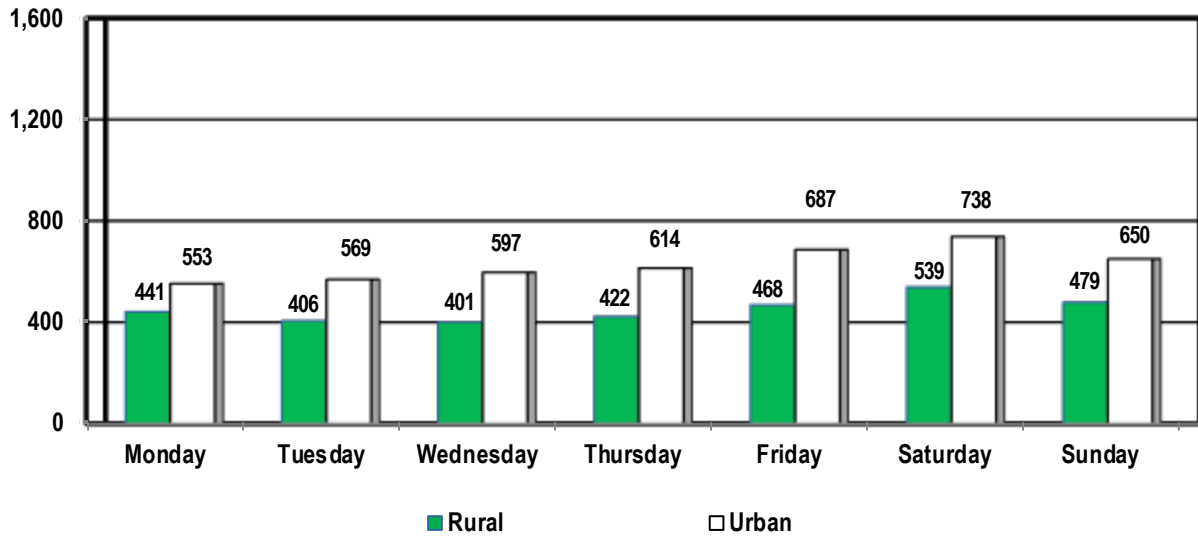
A total of 3 crashes occurred in an unknown location. The greatest number of fatal crashes occurred on Saturdays with 143 crashes in urban locations and 69 crashes in rural locations.

Fatal Crashes by Time of Day



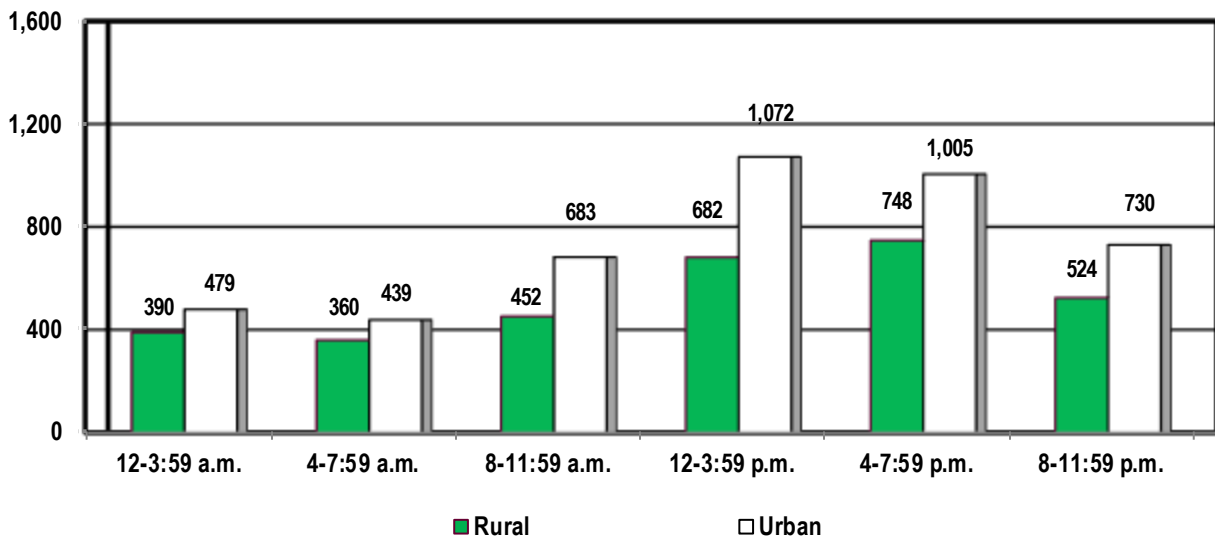
A total of 3 crashes occurred in an unknown location. In all, 58.3% of all fatal crashes occurred between 4 p.m. and 3:59 a.m. Of these crashes, 75.5% occurred on urban roads (536 crashes).

A-Injury Crashes by Day of Week



A total of 12 crashes occurred in an unknown location. The greatest number of A-injury crashes occurred on Saturdays. The second-largest number of A-injury crashes occurred on Fridays.

A-Injury Crashes by Time of Day



A total of 12 crashes occurred in an unknown location. Approximately 59.4% of all A-injury crashes occurred between 12 p.m. and 11:59 p.m. Of these, 62.4% occurred on urban roads.

2021 Illinois Crash Facts & Statistics

Crashes by Type of Road

| TYPE OF ROAD | CRASH SEVERITY | | | Total |
|-------------------------------|----------------|---------------|--------------|----------------|
| | Fatal | Injury | A-Injury | |
| URBAN | | | | |
| Freeway & Expressway/Toll | 9 | 263 | 32 | 1,362 |
| <i>Percent</i> | <i>0.74</i> | <i>0.43</i> | <i>0.42</i> | <i>0.46</i> |
| Interstate/Toll | 131 | 4,615 | 449 | 30,488 |
| <i>Percent</i> | <i>10.76</i> | <i>7.57</i> | <i>5.93</i> | <i>10.32</i> |
| Local Road or Street/Toll | 80 | 6,912 | 796 | 35,422 |
| <i>Percent</i> | <i>6.57</i> | <i>11.33</i> | <i>10.51</i> | <i>11.98</i> |
| Major Collector/Toll | 119 | 5,447 | 640 | 22,890 |
| <i>Percent</i> | <i>9.78</i> | <i>8.93</i> | <i>8.45</i> | <i>7.74</i> |
| Minor Arterial/Toll | 215 | 10,170 | 1,090 | 40,347 |
| <i>Percent</i> | <i>17.67</i> | <i>16.67</i> | <i>14.39</i> | <i>13.65</i> |
| Minor Collector/Toll | 13 | 750 | 86 | 3,063 |
| <i>Percent</i> | <i>1.07</i> | <i>1.23</i> | <i>1.14</i> | <i>1.04</i> |
| Other Principal Arterial/Toll | 303 | 11,834 | 1,315 | 49,088 |
| <i>Percent</i> | <i>24.90</i> | <i>19.40</i> | <i>17.36</i> | <i>16.60</i> |
| Unknown | 1 | 0 | 0 | 1 |
| <i>Percent</i> | <i>0.00</i> | <i>0.00</i> | <i>0.00</i> | <i>0.00</i> |
| Urban Total | 871 | 39,991 | 4,408 | 182,661 |
| <i>Percent</i> | <i>71.57</i> | <i>65.57</i> | <i>58.18</i> | <i>61.79</i> |

In 2021, there were 295,604 total crashes. Of these crashes, 61.79% occurred on urban roads, while 65.57% of all injury crashes occurred on urban roads.

2021 Illinois Crash Facts & Statistics

Crashes by Type of Road

| TYPE OF ROAD | CRASH SEVERITY | | | Total |
|--------------------------|----------------|---------------|---------------|----------------|
| | Fatal | Injury | A-Injury | |
| Rural | | | | |
| Freeway & Expressway | 1 | 16 | 3 | 91 |
| <i>Percent</i> | <i>0.08</i> | <i>0.03</i> | <i>0.04</i> | <i>0.03</i> |
| Interstate/Toll | 42 | 784 | 170 | 4,476 |
| <i>Percent</i> | <i>3.45</i> | <i>1.29</i> | <i>2.25</i> | <i>1.51</i> |
| Local Road or Street | 47 | 1,119 | 275 | 4,780 |
| <i>Percent</i> | <i>3.86</i> | <i>1.83</i> | <i>3.63</i> | <i>1.62</i> |
| Major Collector | 101 | 1,289 | 326 | 6,129 |
| <i>Percent</i> | <i>8.30</i> | <i>2.11</i> | <i>4.30</i> | <i>2.07</i> |
| Minor Arterial | 80 | 1,221 | 305 | 5,645 |
| <i>Percent</i> | <i>6.57</i> | <i>2.00</i> | <i>4.03</i> | <i>1.91</i> |
| Minor Collector | 13 | 233 | 54 | 904 |
| <i>Percent</i> | <i>1.07</i> | <i>0.38</i> | <i>0.71</i> | <i>0.31</i> |
| Other Principal Arterial | 56 | 918 | 217 | 4,319 |
| <i>Percent</i> | <i>4.60</i> | <i>1.51</i> | <i>2.86</i> | <i>1.46</i> |
| Unknown | 3 | 15,331 | 1,806 | 85,985 |
| <i>Percent</i> | <i>0.25</i> | <i>25.14</i> | <i>23.84</i> | <i>29.09</i> |
| Rural Total | 343 | 20,911 | 3,156 | 112,329 |
| <i>Percent</i> | <i>28.18</i> | <i>34.29</i> | <i>41.66</i> | <i>38.00</i> |
| Overall Unknown | 3 | 89 | 12 | 614 |
| <i>Percent</i> | <i>0.25</i> | <i>0.15</i> | <i>0.16</i> | <i>0.21</i> |
| Total | 1,217 | 60,991 | 7,576 | 295,604 |
| <i>Percent</i> | <i>100.00</i> | <i>100.00</i> | <i>100.00</i> | <i>100.00</i> |

In 2021, there were 295,604 total crashes. Of these crashes, 38% occurred on rural roads, while 28.18% of all fatal crashes occurred on rural roads.

2021 Illinois Crash Facts & Statistics

Crashes by Type of Collision

| TYPE OF COLLISION | CRASH SEVERITY | | | Total |
|------------------------------|----------------|---------------|--------------|----------------|
| | Fatal | Injury | A-Injury | |
| Vehicle Overturned | 63 | 1,647 | 422 | 3,232 |
| Pedestrian | 196 | 3,234 | 795 | 3,537 |
| Train | 6 | 26 | 8 | 87 |
| Pedalcyclist | 35 | 2,112 | 299 | 2,322 |
| Animal | 2 | 632 | 77 | 15,285 |
| Fixed Object | 324 | 8,014 | 1,409 | 31,742 |
| Other Object | 19 | 838 | 122 | 4,896 |
| Other Non-Collision | 17 | 629 | 141 | 2,336 |
| Parked | 37 | 2,366 | 302 | 37,850 |
| Front to Rear | 107 | 14,356 | 963 | 71,563 |
| Front to Front | 146 | 1,283 | 326 | 2,702 |
| Sideswipe-Same Direction | 13 | 3,045 | 240 | 33,343 |
| Sideswipe-Opposite Direction | 20 | 706 | 102 | 3,081 |
| Angle | 118 | 8,961 | 1,010 | 29,094 |
| Turning | 114 | 12,816 | 1,329 | 49,983 |
| Rear to Side | 0 | 132 | 16 | 1,654 |
| Rear to Rear | 0 | 22 | 3 | 377 |
| Rear to Front | 0 | 172 | 12 | 2,520 |
| TOTAL | 1,217 | 60,991 | 7,576 | 295,604 |

At 26.6%, crashes involving fixed objects comprise the largest number of fatal crashes in 2021. Front-to-rear collisions comprise the highest number of injury crashes.

Work Zone Crashes

A work zone is an area of a trafficway (right-of-way line to right-of-way line) where construction, maintenance or utility work activities are identified by warning signs, signals or indicators, including those on transport devices that mark the beginning and end of a construction, maintenance or utility work activity. It extends from the first warning sign, signal or flashing lights to the "END ROAD WORK" sign or the last traffic control device pertinent to that work activity. In Illinois, the first warning sign denoting the beginning of a work zone consists of an orange diamond sign displaying the message "ROAD CONSTRUCTION AHEAD" or "ROAD WORK AHEAD." Work zones also include roadway sections where there is ongoing, moving work activity, such as lane line painting or roadside mowing, only if the beginning of the ongoing, moving work activity is designated by warning signs or signals.

A work zone crash is a motor vehicle traffic crash in which the first harmful event occurs within the boundaries of a work zone or the approach to or exit from a work zone, resulting in activity, behavior or control related to the movement of the traffic units through the work zone.

Workers do not have to be present at the time of the crash for it to be considered a work zone crash.

| | |
|-------------------------|-------|
| Total Crashes | 6,366 |
| Fatal Crashes | 20 |
| Injury Crashes | 1,105 |
| A-Injury Crashes | 123 |
| People Killed | 24 |
| People Injured | 1,580 |

CRASHES BY TYPE OF ROAD*

| URBAN | |
|--------------------------|--------------|
| Freeway & Expressway | 67 |
| Interstate/Toll | 3,297 |
| Local Road or Street | 229 |
| Major Collector | 187 |
| Minor Arterial/Toll | 522 |
| Minor Collector | 42 |
| Other Principal Arterial | 848 |
| Unknown | 0 |
| Urban Total | 5,192 |
| RURAL | |
| Freeway & Expressway | 2 |
| Interstate/Toll | 256 |
| Local Road or Street | 18 |
| Major Collector | 16 |
| Minor Arterial | 69 |
| Minor Collector | 2 |
| Other Principal Arterial | 61 |
| Unknown | 744 |
| Rural Total | 1,168 |

*Six crashes occurred at an unknown location.

A-INJURIES AND FATALITIES BY PERSON TYPE

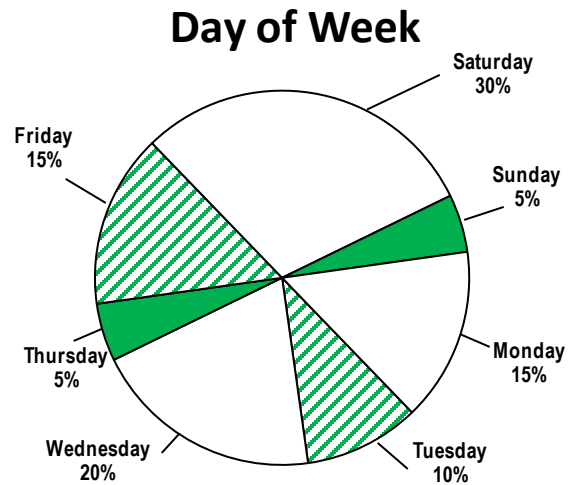
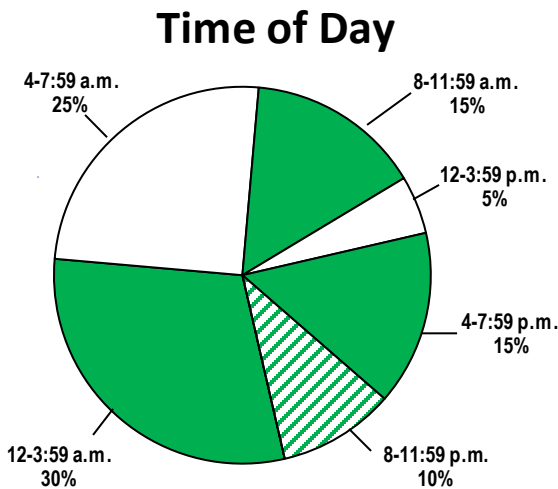
| Person Type | A-Injuries | Fatalities |
|---------------|------------|------------|
| Drivers | 108 | 18 |
| Passengers | 42 | 4 |
| Workers | 7 | 0 |
| Pedestrians | 5 | 1 |
| Pedalcyclists | 1 | 1 |

2021 Illinois Crash Facts & Statistics

Large Trucks Involved in Work Zone Crashes by Crash Severity

| TRUCK TYPE | CRASH SEVERITY | | | | Total |
|--------------------------------|----------------|------------|-----------|-----------------|--------------|
| | Fatal | Injury | A-Injury | Property Damage | |
| Truck Single Unit | 0 | 58 | 16 | 284 | 342 |
| Tractor with Semi-Trailer | 10 | 151 | 21 | 1,031 | 1,192 |
| Tractor without Semi-Trailer | 0 | 5 | 0 | 49 | 54 |
| Single Unit Truck with Trailer | 0 | 24 | 7 | 83 | 107 |
| TOTAL | 10 | 238 | 44 | 1,447 | 1,695 |

Fatal Work Zone Crashes by Time of Day and Day of Week



Deer Crashes

In 2021, there were 14,516 crashes involving deer. Deer crashes account for about 4.9% of total crashes.

Twenty percent of deer crashes occurred during daylight hours; 62.3% occurred in darkness. Approximately 72.3% of deer crashes were on rural roads, with 24.5% of the crashes on rural major collectors.

| | |
|-------------------------|--------|
| Total Crashes | 14,516 |
| Fatal Crashes | 2 |
| Injury Crashes | 583 |
| A-Injury Crashes | 64 |
| People Killed | 2 |
| People Injured | 678 |

CRASHES BY LIGHT CONDITION

| | |
|-----------------------|---------------|
| Daylight | 2,900 |
| Dawn | 1,102 |
| Dusk | 542 |
| Darkness | 9,047 |
| Darkness-Road Lighted | 803 |
| Unknown | 122 |
| TOTAL | 14,516 |

A-INJURY CRASHES AND FATAL CRASHES BY TYPE OF ROAD*

| Type of Road | A-Injury | Fatal |
|-------------------------------|-----------|----------|
| URBAN | | |
| Freeway & Expressway/Toll | 0 | 0 |
| Interstate/Toll | 0 | 0 |
| Local Road or Street/Toll | 1 | 1 |
| Major Collector/Toll | 3 | 0 |
| Minor Arterial/Toll | 3 | 0 |
| Minor Collector | 0 | 0 |
| Other Principal Arterial/Toll | 1 | 0 |
| Unknown | 0 | 0 |
| Urban Total | 8 | 1 |
| RURAL | | |
| Freeway & Expressway | 0 | 0 |
| Interstate/Toll | 2 | 0 |
| Local Street or Road | 6 | 0 |
| Major Collector | 23 | 1 |
| Minor Arterial | 7 | 0 |
| Minor Collector | 2 | 0 |
| Other Principal Arterial | 6 | 0 |
| Unknown | 9 | 0 |
| Rural Total | 55 | 1 |

*One A-injury crash occurred at an unknown location.

2021 Illinois Crash Facts & Statistics

Pedestrian and Pedalcycle Crashes

| | PEDESTRIAN | | | PEDALCYCLE | | |
|---|--------------------------------------|---------------|-----------------|--------------------------------------|---------------|-----------------|
| Total Crashes | 3,738 | | | 2,352 | | |
| Fatal Crashes | 213 | | | 36 | | |
| Injury Crashes | 3,406 | | | 2,137 | | |
| A-Injury Crashes | 852 | | | 301 | | |
| Property Damage Crashes | 119 | | | 179 | | |
| Number of Crashes by Type of Road* | | | | | | |
| | PEDESTRIAN Crash Severity | | | PEDALCYCLE Crash Severity | | |
| | Fatal | Injury | A-Injury | Fatal | Injury | A-Injury |
| Urban | | | | | | |
| Freeway & Expressway/Toll | 2 | 3 | 2 | 1 | 0 | 0 |
| Interstate/Toll | 14 | 35 | 16 | 0 | 4 | 0 |
| Local Road or Street/Toll | 19 | 572 | 127 | 5 | 447 | 52 |
| Major Collector/Toll | 25 | 355 | 80 | 7 | 294 | 47 |
| Minor Arterial/Toll | 50 | 515 | 138 | 9 | 335 | 49 |
| Minor Collector | 5 | 38 | 8 | 0 | 41 | 7 |
| Other Principal Arterial/Toll | 77 | 399 | 127 | 13 | 252 | 36 |
| Unknown | 0 | 0 | 0 | 0 | 0 | 0 |
| Urban Total | 192 | 1,917 | 498 | 35 | 1,373 | 191 |
| Rural | | | | | | |
| Freeway & Expressway | 0 | 0 | 0 | 0 | 0 | 0 |
| Interstate/Toll | 5 | 6 | 2 | 0 | 0 | 0 |
| Local Road or Street | 1 | 17 | 4 | 0 | 13 | 5 |
| Major Collector | 4 | 7 | 5 | 0 | 4 | 1 |
| Minor Arterial | 2 | 9 | 2 | 0 | 5 | 1 |
| Minor Collector | 0 | 1 | 1 | 0 | 1 | 0 |
| Other Principal Arterial | 5 | 6 | 4 | 0 | 6 | 3 |
| Unknown | 1 | 1,430 | 333 | 1 | 733 | 100 |
| Rural Total | 18 | 1,476 | 351 | 1 | 762 | 110 |

*In 2021, there were 3 fatal pedestrian crashes, 13 injury crashes and 3 A-injury crashes at unknown locations. There were 2 pedalcycle injury crashes at unknown locations.

Train Crashes

Train crashes are crashes in which motor vehicles are involved with trains. Pedestrians and pedalcyclists hit by trains are not included.

Fatal crashes and A-injury crashes involving trains account for less than 1% of all fatal and A-injury crashes combined in 2021.

| | |
|-------------------------------|----|
| Total Crashes | 90 |
| Injury Crashes | 27 |
| A-Injury Crashes | 8 |
| Fatal Crashes | 7 |
| People Killed | 9 |
| People Injured | 31 |
| People with A-Injuries | 8 |

Crashes by Type of Traffic Control

| | Fatal | A-Injury |
|-------------------|----------|----------|
| RR Gates | 6 | 5 |
| Other RR Crossing | 1 | 2 |
| Warning Sign | 0 | 0 |
| Stop Sign/Flasher | 0 | 0 |
| RR Crossing Sign | 0 | 0 |
| No Control | 0 | 0 |
| Traffic Signal | 0 | 0 |
| Yield | 0 | 1 |
| TOTAL | 7 | 8 |

Fatalities and A-Injuries by Type of Road

| | Fatalities | A-Injuries |
|--------------------------|------------|------------|
| Urban | | |
| Local Street or Road | 0 | 0 |
| Major Collector | 3 | 1 |
| Minor Arterial | 2 | 2 |
| Minor Collector | 0 | 1 |
| Other Principal Arterial | 0 | 1 |
| Urban Total | 5 | 5 |
| Rural | | |
| Local Street or Road | 2 | 2 |
| Major Collector | 2 | 0 |
| Minor Arterial | 0 | 1 |
| Minor Collector | 0 | 0 |
| Other Principal Arterial | 0 | 0 |
| Rural Total | 4 | 3 |

2021 Illinois Crash Facts & Statistics

County Motor Vehicle Crash Statistics

| COUNTY | CRASHES | FATAL CRASHES | INJURY CRASHES | A-INJURY CRASHES |
|------------|---------|---------------|----------------|------------------|
| Adams | 1,321 | 6 | 227 | 33 |
| Alexander | 102 | 4 | 32 | 9 |
| Bond | 297 | 5 | 54 | 18 |
| Boone | 765 | 10 | 198 | 37 |
| Brown | 156 | 0 | 14 | 1 |
| Bureau | 782 | 11 | 145 | 39 |
| Calhoun | 85 | 2 | 13 | 2 |
| Carroll | 243 | 1 | 44 | 9 |
| Cass | 192 | 1 | 34 | 5 |
| Champaign | 3,013 | 22 | 784 | 95 |
| Christian | 457 | 11 | 96 | 11 |
| Clark | 376 | 1 | 61 | 14 |
| Clay | 275 | 2 | 49 | 15 |
| Clinton | 551 | 7 | 106 | 31 |
| Coles | 957 | 8 | 184 | 30 |
| Cook | 156,289 | 423 | 29,409 | 3,265 |
| Crawford | 447 | 1 | 66 | 10 |
| Cumberland | 335 | 4 | 47 | 12 |
| DeKalb | 1,523 | 13 | 408 | 80 |
| DeWitt | 330 | 2 | 55 | 12 |
| Douglas | 328 | 1 | 63 | 20 |
| DuPage | 15,442 | 43 | 3,559 | 285 |
| Edgar | 341 | 0 | 70 | 8 |
| Edwards | 66 | 0 | 14 | 4 |
| Effingham | 1,066 | 9 | 225 | 42 |
| Fayette | 479 | 5 | 91 | 22 |
| Ford | 243 | 3 | 58 | 9 |
| Franklin | 777 | 11 | 157 | 43 |
| Fulton | 712 | 6 | 123 | 32 |
| Gallatin | 94 | 1 | 25 | 6 |
| Greene | 131 | 0 | 35 | 7 |
| Grundy | 1,118 | 9 | 227 | 31 |
| Hamilton | 162 | 1 | 38 | 11 |
| Hancock | 341 | 4 | 53 | 18 |
| Hardin | 34 | 1 | 10 | 4 |
| Henderson | 160 | 0 | 28 | 13 |
| Henry | 849 | 4 | 168 | 30 |
| Iroquois | 584 | 13 | 120 | 26 |
| Jackson | 1,224 | 4 | 315 | 57 |
| Jasper | 206 | 0 | 34 | 8 |
| Jefferson | 1,067 | 8 | 272 | 42 |
| Jersey | 449 | 6 | 96 | 35 |
| Jo Daviess | 437 | 0 | 79 | 24 |
| Johnson | 227 | 2 | 52 | 14 |
| Kane | 9,380 | 40 | 2,324 | 183 |
| Kankakee | 2,345 | 18 | 400 | 56 |
| Kendall | 1,920 | 20 | 468 | 73 |
| Knox | 862 | 7 | 189 | 32 |
| Lake | 11,174 | 36 | 2,764 | 308 |
| LaSalle | 2,021 | 13 | 454 | 101 |
| Lawrence | 300 | 3 | 48 | 10 |

2021 Illinois Crash Facts & Statistics

County Statistics (continued)

| COUNTY | CRASHES | FATAL CRASHES | INJURY CRASHES | A-INJURY CRASHES |
|--------------|----------------|---------------|----------------|------------------|
| Lee | 737 | 2 | 133 | 28 |
| Livingston | 556 | 5 | 134 | 21 |
| Logan | 576 | 5 | 118 | 15 |
| McDonough | 475 | 1 | 64 | 10 |
| McHenry | 3,974 | 18 | 1,019 | 135 |
| McLean | 2,961 | 12 | 604 | 68 |
| Macon | 2,223 | 9 | 527 | 62 |
| Macoupin | 711 | 9 | 110 | 24 |
| Madison | 5,648 | 27 | 1,296 | 195 |
| Marion | 847 | 4 | 144 | 35 |
| Marshall | 222 | 3 | 52 | 16 |
| Mason | 187 | 5 | 33 | 6 |
| Massac | 329 | 0 | 84 | 16 |
| Menard | 135 | 1 | 21 | 3 |
| Mercer | 213 | 3 | 31 | 3 |
| Monroe | 537 | 2 | 110 | 17 |
| Montgomery | 649 | 8 | 123 | 24 |
| Morgan | 551 | 5 | 131 | 30 |
| Moultrie | 253 | 2 | 49 | 10 |
| Ogle | 702 | 8 | 176 | 23 |
| Peoria | 4,283 | 21 | 1,187 | 147 |
| Perry | 345 | 1 | 85 | 21 |
| Piatt | 226 | 2 | 57 | 8 |
| Pike | 430 | 3 | 46 | 7 |
| Pope | 47 | 1 | 11 | 6 |
| Pulaski | 113 | 0 | 37 | 12 |
| Putnam | 139 | 1 | 17 | 7 |
| Randolph | 597 | 7 | 118 | 34 |
| Richland | 305 | 2 | 72 | 18 |
| Rock Island | 3,221 | 8 | 643 | 80 |
| St. Clair | 5,624 | 35 | 1,511 | 234 |
| Saline | 457 | 2 | 99 | 26 |
| Sangamon | 4,828 | 23 | 1,076 | 133 |
| Schuyler | 202 | 2 | 33 | 6 |
| Scott | 89 | 1 | 15 | 3 |
| Shelby | 440 | 6 | 81 | 23 |
| Stark | 85 | 2 | 12 | 1 |
| Stephenson | 756 | 6 | 166 | 31 |
| Tazewell | 2,343 | 15 | 561 | 72 |
| Union | 359 | 3 | 77 | 17 |
| Vermilion | 1,425 | 8 | 304 | 58 |
| Wabash | 139 | 2 | 23 | 4 |
| Warren | 388 | 2 | 63 | 12 |
| Washington | 347 | 1 | 74 | 22 |
| Wayne | 384 | 2 | 84 | 23 |
| White | 291 | 3 | 65 | 14 |
| Whiteside | 909 | 8 | 207 | 46 |
| Will | 13,331 | 60 | 2,942 | 288 |
| Williamson | 1,496 | 9 | 317 | 46 |
| Winnebago | 6,054 | 47 | 1,379 | 138 |
| Woodford | 430 | 3 | 85 | 16 |
| TOTAL | 295,604 | 1,217 | 60,991 | 7,576 |

Person Data

The data reflected in this section include all people injured, uninjured and killed in motor vehicle crashes by person type.

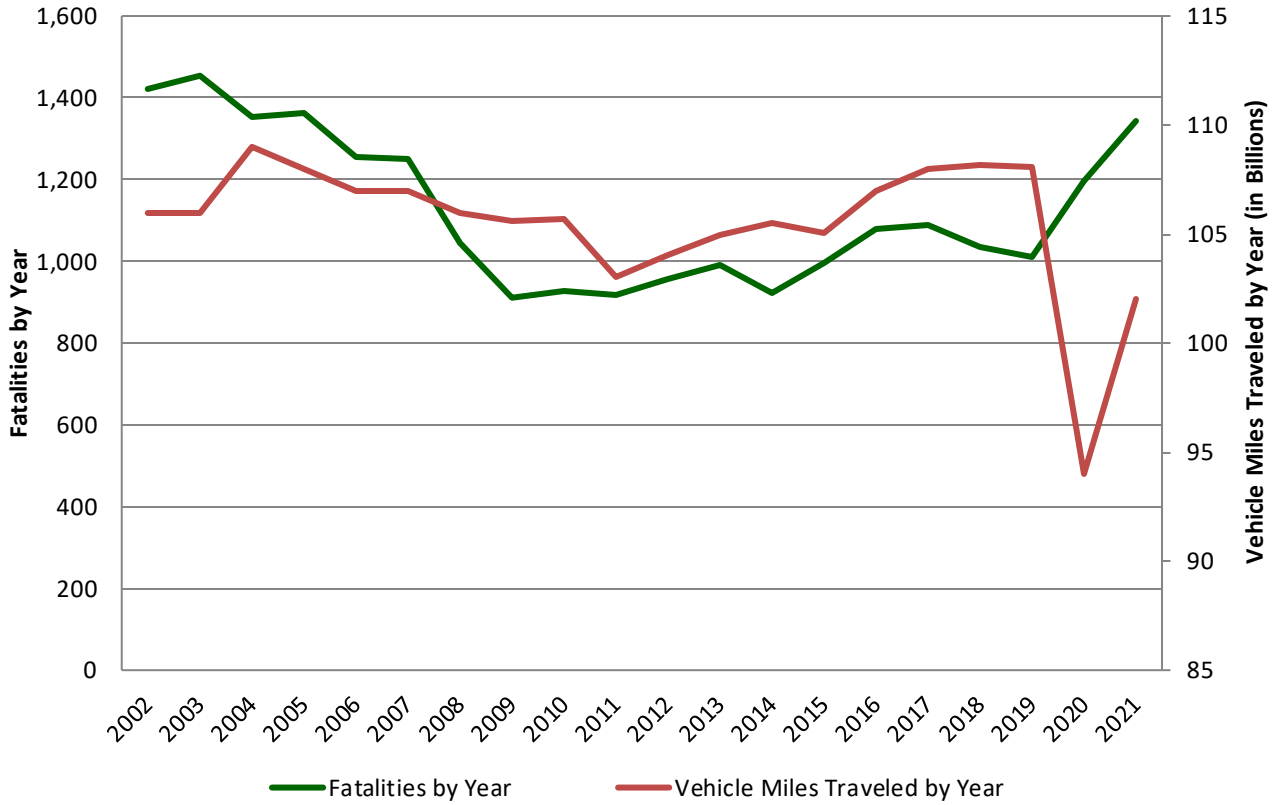
Person Data Overview

- ✚ 85,398 people were injured in motor vehicle crashes.
- ✚ 9,417 people had A-injuries occurring from these crashes. These A-injuries account for 11% of total injuries.
- ✚ 1,341 people were killed in motor vehicle crashes.
- ✚ 853 drivers were killed in motor vehicle crashes
- ✚ 236 passengers of a motor vehicle were killed in crashes.
- ✚ 215 pedestrians were motor vehicle killed in crashes.
- ✚ 35 pedalcyclists were killed in motor vehicle crashes.
- ✚ 174 motorcyclists were killed in motor vehicle crashes.
- ✚ Teenagers, age 16-19, account for 8.4% of the total A-injuries and 7% of the total fatalities.
- ✚ The total estimated cost of crashes in Illinois for 2021 was \$6.7 billion.
 - ✚ Each fatality was estimated to cost \$1,832,220*.
 - ✚ An incapacitating injury (A-injury) was estimated to cost \$105,750*.
 - ✚ A non-incapacitating evident injury (B-injury) was estimated to cost \$30,570*.
 - ✚ A possible injury (C-injury) was estimated to cost \$25,020*.
 - ✚ A property damage crash was estimated to cost \$4,920*.

*Based on estimates made by the National Safety Council for 2021. The estimated costs are a measure of the dollars spent and income not received because of crashes, injuries and fatalities. The 2021 estimated cost of crashes in Illinois was calculated by using injury severity and costs for those particular injuries.

2021 Illinois Crash Facts & Statistics

Illinois Fatalities and Vehicle Miles Traveled* 2002-2021



| YEAR | FATALITIES | TRAVEL |
|------|------------|--------|
| 2002 | 1,420 | 106.18 |
| 2003 | 1,454 | 106.46 |
| 2004 | 1,355 | 108.91 |
| 2005 | 1,363 | 107.86 |
| 2006 | 1,254 | 106.81 |
| 2007 | 1,248 | 107.40 |
| 2008 | 1,043 | 105.64 |
| 2009 | 911 | 105.73 |
| 2010 | 927 | 105.74 |
| 2011 | 918 | 103.37 |

| YEAR | FATALITIES | TRAVEL |
|------|------------|--------|
| 2012 | 956 | 104.46 |
| 2013 | 991 | 105.48 |
| 2014 | 924 | 105.03 |
| 2015 | 998 | 105.37 |
| 2016 | 1,078 | 107.17 |
| 2017 | 1,090 | 108.16 |
| 2018 | 1,035 | 108.07 |
| 2019 | 1,010 | 107.61 |
| 2020 | 1,095 | 94.00 |
| 2021 | 1,341 | 102.22 |

*Travel is stated in billions of miles.

2021 Illinois Crash Facts & Statistics

Drivers Involved in Crashes by Age and Crash Severity

| AGE | Fatal | | Injury | | A-Injury | | Total | | TOTAL LICENSED DRIVERS |
|---------------|--------------|-------------|----------------|--------------|---------------|-------------|----------------|--------------|------------------------------|
| | Crashes | Rate | Crashes | Rate | Crashes | Rate | Crashes | Rate | |
| 15 or Younger | 3 | 0.05 | 143 | 2.24 | 20 | 0.31 | 534 | 8.37 | 63,791 |
| 16 | 11 | 0.10 | 1,471 | 13.20 | 163 | 1.46 | 6,552 | 58.73 | 111,558 |
| 17 | 26 | 0.21 | 2,128 | 17.13 | 202 | 1.62 | 9,004 | 72.50 | 124,197 |
| 18 | 53 | 0.41 | 2,709 | 21.00 | 263 | 2.04 | 11,236 | 87.02 | 129,125 |
| 19 | 48 | 0.36 | 2,903 | 21.63 | 334 | 2.49 | 11,428 | 85.14 | 134,226 |
| 20-24 | 200 | 0.28 | 13,937 | 19.77 | 1,589 | 2.25 | 57,788 | 81.95 | 705,128 |
| 25-29 | 201 | 0.27 | 12,935 | 17.12 | 1,435 | 1.90 | 55,330 | 73.23 | 755,609 |
| 30-34 | 219 | 0.29 | 11,292 | 14.72 | 1,283 | 1.67 | 47,893 | 62.42 | 767,261 |
| 35-39 | 152 | 0.20 | 9,411 | 12.25 | 1,146 | 1.49 | 40,897 | 53.24 | 768,140 |
| 40-44 | 141 | 0.19 | 8,374 | 11.14 | 955 | 1.27 | 37,036 | 49.28 | 751,615 |
| 45-49 | 133 | 0.19 | 7,365 | 10.56 | 846 | 1.21 | 32,442 | 46.53 | 697,232 |
| 50-54 | 137 | 0.19 | 7,142 | 9.91 | 834 | 1.16 | 30,726 | 42.62 | 720,852 |
| 55-59 | 129 | 0.18 | 6,677 | 9.15 | 786 | 1.08 | 28,709 | 39.33 | 729,980 |
| 60-64 | 121 | 0.16 | 5,637 | 7.65 | 663 | 0.90 | 24,316 | 33.02 | 736,396 |
| 65-69 | 74 | 0.12 | 4,106 | 6.47 | 447 | 0.70 | 17,137 | 27.00 | 634,630 |
| 70-74 | 62 | 0.12 | 2,853 | 5.64 | 331 | 0.65 | 11,942 | 23.62 | 505,605 |
| 75 or Older | 97 | 0.17 | 3,524 | 6.15 | 431 | 0.75 | 14,090 | 24.59 | 573,057 |
| Unknown | 96 | -- | 8,006 | -- | 868 | -- | 73,714 | -- | -- |
| TOTAL | 1,903 | 0.21 | 110,613 | 12.42 | 12,596 | 1.41 | 510,774 | 57.34 | 8,908,402 |

Rates are expressed as the number of drivers involved in a particular type of crash per 1,000 licensed drivers.

2021 Illinois Crash Facts & Statistics

Drivers Involved in Fatal Crashes by Age and Location

| AGE | RURAL ROADWAYS Drivers | | URBAN ROADWAYS Drivers | | TOTAL Drivers | |
|---------------|---------------------------|------------|---------------------------|------------|------------------|------------|
| | Involved | Killed | Involved | Killed | Involved | Killed |
| 15 or Younger | 1 | 0 | 2 | 0 | 3 | 0 |
| Percent | 0.2 | 0.0 | 0.1 | 0.0 | 0.2 | 0.0 |
| 16 | 3 | 2 | 8 | 2 | 11 | 4 |
| Percent | 0.6 | 0.7 | 0.6 | 0.4 | 0.6 | 0.5 |
| 17 | 8 | 3 | 18 | 4 | 26 | 7 |
| Percent | 1.6 | 1.0 | 1.3 | 0.7 | 1.4 | 0.8 |
| 18 | 18 | 9 | 35 | 13 | 53 | 22 |
| Percent | 3.5 | 3.0 | 2.5 | 2.4 | 2.8 | 2.6 |
| 19 | 11 | 6 | 37 | 18 | 48 | 24 |
| Percent | 2.1 | 2.0 | 2.7 | 3.3 | 2.5 | 2.8 |
| 20-24 | 37 | 17 | 163 | 50 | 200 | 67 |
| Percent | 7.2 | 5.6 | 11.8 | 9.1 | 10.5 | 7.9 |
| 25-34 | 100 | 49 | 319 | 138 | 420 | 187 |
| Percent | 19.4 | 16.2 | 23.0 | 25.0 | 22.1 | 21.9 |
| 35-44 | 90 | 51 | 203 | 86 | 293 | 137 |
| Percent | 17.5 | 16.9 | 14.7 | 15.6 | 15.4 | 16.1 |
| 45-54 | 78 | 49 | 191 | 88 | 270 | 137 |
| Percent | 15.1 | 16.2 | 13.8 | 16.0 | 14.2 | 16.1 |
| 55-64 | 78 | 43 | 172 | 71 | 250 | 114 |
| Percent | 15.1 | 14.2 | 12.4 | 12.9 | 13.1 | 13.4 |
| 65-74 | 53 | 40 | 82 | 42 | 136 | 82 |
| Percent | 10.3 | 13.2 | 5.9 | 7.6 | 7.1 | 9.6 |
| 75 or Older | 37 | 33 | 59 | 38 | 97 | 71 |
| Percent | 7.2 | 10.9 | 4.3 | 6.9 | 5.1 | 8.3 |
| Unknown | 1 | 0 | 95 | 1 | 96 | 1 |
| Percent | 0.2 | 0.0 | 6.9 | 0.2 | 5.0 | 0.1 |
| TOTAL | 515 | 302 | 1,384 | 551 | 1,903 | 853 |
| Percent | 100.0 | 100.0 | 100.0 | 100.0 | 100.0 | 100.0 |

In 2021, there were 4 drivers that were involved in crashes that occurred in unknown locations.

2021 Illinois Crash Facts & Statistics

Injuries by Person Type, Age and Gender

| AGE | DRIVERS | | | | PASSENGERS | | | | TOTAL OCCUPANT INJURIES | | | |
|--------------|---------------|---------------|---------------|--------------|--------------|---------------|---------------|--------------|-------------------------|---------------|---------------|--------------|
| | Male | Female | Total | % | Male | Female | Total | % | Male | Female | Total | % |
| 4 or Younger | 1 | 0 | 1 | 0.0 | 677 | 628 | 1,305 | 6.1 | 678 | 628 | 1,306 | 1.6 |
| 5-9 | 0 | 0 | 0 | 0.0 | 768 | 780 | 1,548 | 7.2 | 768 | 780 | 1,548 | 2.0 |
| 10-14 | 3 | 2 | 5 | 0.0 | 754 | 924 | 1,678 | 7.8 | 757 | 926 | 1,683 | 2.1 |
| 15-19 | 2,483 | 2,460 | 4,943 | 8.5 | 1,215 | 1,882 | 3,097 | 14.4 | 3,698 | 4,342 | 8,040 | 10.1 |
| 20-24 | 3,967 | 3,962 | 7,929 | 13.7 | 932 | 1,549 | 2,481 | 11.6 | 4,899 | 5,511 | 10,410 | 13.1 |
| 25-34 | 7,194 | 6,483 | 13,677 | 23.6 | 1,341 | 1,965 | 3,306 | 15.4 | 8,535 | 8,448 | 16,983 | 21.4 |
| 35-44 | 5,006 | 4,648 | 9,654 | 16.7 | 790 | 1,270 | 2,060 | 9.6 | 5,796 | 5,918 | 11,714 | 14.8 |
| 45-54 | 4,187 | 3,830 | 8,017 | 13.9 | 578 | 1,074 | 1,652 | 7.7 | 4,765 | 4,904 | 9,669 | 12.2 |
| 55-64 | 3,753 | 3,154 | 6,907 | 11.9 | 469 | 1,000 | 1,469 | 6.8 | 4,222 | 4,154 | 8,376 | 10.6 |
| 65-74 | 2,117 | 1,811 | 3,928 | 6.8 | 238 | 704 | 942 | 4.4 | 2,355 | 2,515 | 4,870 | 6.1 |
| 75 or Older | 1,050 | 1,004 | 2,054 | 3.6 | 155 | 472 | 627 | 2.9 | 1,205 | 1,476 | 2,681 | 3.4 |
| Unknown | 412 | 309 | 721 | 1.2 | 515 | 793 | 1,308 | 6.1 | 927 | 1,102 | 2,029 | 2.6 |
| TOTAL | 30,173 | 27,663 | 57,836 | 100.0 | 8,432 | 13,041 | 21,473 | 100.0 | 38,605 | 40,704 | 79,309 | 100.0 |

| AGE | PEDESTRIANS | | | | PEDALCYCLISTS | | | | TOTAL NON-OCCUPANT INJURIES | | | |
|--------------|--------------|--------------|--------------|--------------|---------------|------------|--------------|--------------|-----------------------------|--------------|--------------|--------------|
| | Male | Female | Total | % | Male | Female | Total | % | Male | Female | Total | % |
| 4 or Younger | 45 | 16 | 61 | 1.7 | 4 | 0 | 4 | 0.2 | 49 | 16 | 65 | 1.2 |
| 5-9 | 49 | 35 | 84 | 2.4 | 39 | 9 | 48 | 2.2 | 88 | 44 | 132 | 2.3 |
| 10-14 | 114 | 88 | 202 | 5.8 | 212 | 50 | 262 | 12.3 | 326 | 138 | 464 | 8.2 |
| 15-19 | 140 | 168 | 308 | 8.8 | 265 | 55 | 320 | 15.0 | 405 | 223 | 628 | 11.1 |
| 20-24 | 131 | 153 | 284 | 8.1 | 132 | 42 | 174 | 8.1 | 263 | 195 | 458 | 8.1 |
| 25-34 | 359 | 290 | 649 | 18.5 | 286 | 101 | 387 | 18.1 | 645 | 391 | 1,036 | 18.3 |
| 35-44 | 266 | 181 | 447 | 12.7 | 216 | 48 | 264 | 12.3 | 482 | 229 | 711 | 12.6 |
| 45-54 | 263 | 183 | 446 | 12.7 | 180 | 47 | 227 | 10.6 | 443 | 230 | 673 | 11.9 |
| 55-64 | 276 | 196 | 472 | 13.4 | 212 | 36 | 248 | 11.6 | 488 | 232 | 720 | 12.7 |
| 65-74 | 176 | 133 | 309 | 8.8 | 92 | 9 | 101 | 4.7 | 268 | 142 | 410 | 7.3 |
| 75 or Older | 65 | 76 | 141 | 4.0 | 15 | 4 | 19 | 0.9 | 80 | 80 | 160 | 2.8 |
| Unknown | 62 | 45 | 107 | 3.0 | 64 | 20 | 84 | 3.9 | 126 | 65 | 191 | 3.4 |
| TOTAL | 1,946 | 1,564 | 3,510 | 100.0 | 1,717 | 421 | 2,138 | 100.0 | 3,663 | 1,985 | 5,648 | 100.0 |

Note: The totals above do not include 280 drivers, 118 passengers, 10 pedestrians and 2 pedalcyclists whose gender was unknown. An additional 31 occupants of non-motor vehicles were also injured.

Occupant: Any person who is part of a transport vehicle.

Non-Occupant: Any person who is part of a pedalcycle in transport (pedalcyclist) or any person who is not an occupant (pedestrian).

Drivers injured amount to 68.1% of all injuries for 2021.

Passengers represent 25.3% of the total number of injuries in 2021.

Pedestrians account for 4.1% of all injuries.

Pedalcyclists account for 2.5% of all injuries.

2021 Illinois Crash Facts & Statistics

A-Injuries by Person Type, Age and Gender

| AGE | DRIVERS | | | | PASSENGERS | | | | TOTAL OCCUPANT A-INJURIES | | | |
|--------------|--------------|--------------|--------------|--------------|------------|--------------|--------------|--------------|---------------------------|--------------|--------------|--------------|
| | Male | Female | Total | % | Male | Female | Total | % | Male | Female | Total | % |
| 4 or Younger | 1 | 0 | 1 | 0.0 | 38 | 36 | 74 | 3.6 | 39 | 36 | 75 | 0.9 |
| 5-9 | 0 | 0 | 0 | 0.0 | 49 | 52 | 101 | 4.9 | 49 | 52 | 101 | 1.2 |
| 10-14 | 0 | 0 | 0 | 0.0 | 56 | 56 | 112 | 5.4 | 56 | 56 | 112 | 1.4 |
| 15-19 | 266 | 170 | 436 | 7.1 | 155 | 163 | 318 | 15.4 | 421 | 333 | 754 | 9.2 |
| 20-24 | 530 | 289 | 819 | 13.3 | 102 | 167 | 269 | 13.1 | 632 | 456 | 1,088 | 13.2 |
| 25-34 | 955 | 527 | 1,482 | 24.1 | 153 | 215 | 368 | 17.9 | 1,108 | 742 | 1,850 | 22.5 |
| 35-44 | 679 | 380 | 1,059 | 17.2 | 94 | 145 | 239 | 11.6 | 773 | 525 | 1,298 | 15.8 |
| 45-54 | 530 | 325 | 855 | 13.9 | 50 | 122 | 172 | 8.3 | 580 | 447 | 1,027 | 12.5 |
| 55-64 | 486 | 278 | 764 | 12.4 | 50 | 103 | 153 | 7.4 | 536 | 381 | 917 | 11.2 |
| 65-74 | 236 | 160 | 396 | 6.4 | 19 | 67 | 86 | 4.2 | 255 | 227 | 482 | 5.9 |
| 75 or Older | 126 | 119 | 245 | 4.0 | 14 | 47 | 61 | 3.0 | 140 | 166 | 306 | 3.7 |
| Unknown | 64 | 38 | 102 | 1.7 | 45 | 62 | 107 | 5.2 | 109 | 100 | 209 | 2.5 |
| TOTAL | 3,873 | 2,286 | 6,159 | 100.0 | 825 | 1,235 | 2,060 | 100.0 | 4,698 | 3,521 | 8,219 | 100.0 |

| AGE | PEDESTRIANS | | | | PEDALCYCLISTS | | | | TOTAL NON-OCCUPANT A-INJURIES | | | |
|--------------|-------------|------------|------------|--------------|---------------|-----------|------------|--------------|-------------------------------|------------|--------------|--------------|
| | Male | Female | Total | % | Male | Female | Total | % | Male | Female | Total | % |
| 4 or Younger | 13 | 3 | 16 | 1.9 | 1 | 0 | 1 | 0.3 | 14 | 3 | 17 | 1.5 |
| 5-9 | 9 | 3 | 12 | 1.4 | 2 | 2 | 4 | 1.3 | 11 | 5 | 16 | 1.4 |
| 10-14 | 25 | 16 | 41 | 4.8 | 19 | 6 | 25 | 8.3 | 44 | 22 | 66 | 5.7 |
| 15-19 | 30 | 36 | 66 | 7.7 | 27 | 8 | 35 | 11.6 | 57 | 44 | 101 | 8.7 |
| 20-24 | 37 | 27 | 64 | 7.5 | 20 | 1 | 21 | 7.0 | 57 | 28 | 85 | 7.3 |
| 25-34 | 81 | 74 | 155 | 18.1 | 36 | 16 | 52 | 17.2 | 117 | 90 | 207 | 17.8 |
| 35-44 | 72 | 45 | 117 | 13.6 | 37 | 7 | 44 | 14.6 | 109 | 52 | 161 | 13.9 |
| 45-54 | 79 | 43 | 122 | 14.2 | 28 | 7 | 35 | 11.6 | 107 | 50 | 157 | 13.5 |
| 55-64 | 66 | 50 | 116 | 13.5 | 46 | 5 | 51 | 16.9 | 112 | 55 | 167 | 14.4 |
| 65-74 | 48 | 38 | 86 | 10.0 | 16 | 3 | 19 | 6.3 | 64 | 41 | 105 | 9.1 |
| 75 or Older | 20 | 24 | 44 | 5.1 | 7 | 2 | 9 | 3.0 | 27 | 26 | 53 | 4.6 |
| Unknown | 13 | 6 | 19 | 2.2 | 4 | 2 | 6 | 2.0 | 17 | 8 | 25 | 2.0 |
| TOTAL | 493 | 365 | 858 | 100.0 | 243 | 59 | 302 | 100.0 | 736 | 424 | 1,160 | 100.0 |

Note: The totals above do not include 19 drivers, 12 passengers, and 3 pedestrians, whose gender was unknown. An additional 4 occupants of non-motor vehicles were also injured.

Occupant: Any person who is part of a transport vehicle.

Non-Occupant: Any person who is part of a pedalcycle in transport (pedalcyclist) or any person who is not an occupant (pedestrian).

Drivers injured amount to 65.6% of A-injuries for 2021.

Passengers represent 22% of the total number of A-injuries in 2021.

Pedestrians account for 9.1% of A-injuries.

Pedalcyclists account for 3.2% of A-injuries.

2021 Illinois Crash Facts & Statistics

Fatalities by Person Type, Age and Gender

| AGE | DRIVERS | | | | PASSENGERS | | | | TOTAL OCCUPANT FATALITIES | | | |
|--------------|------------|------------|------------|--------------|------------|------------|------------|--------------|---------------------------|------------|--------------|--------------|
| | Male | Female | Total | % | Male | Female | Total | % | Male | Female | Total | % |
| 4 or Younger | 0 | 0 | 0 | 0.0 | 5 | 4 | 9 | 3.8 | 5 | 4 | 9 | 0.8 |
| 5-9 | 0 | 0 | 0 | 0.0 | 5 | 2 | 7 | 3.0 | 5 | 2 | 7 | 0.6 |
| 10-14 | 0 | 0 | 0 | 0.0 | 5 | 5 | 10 | 4.3 | 5 | 5 | 10 | 0.9 |
| 15-19 | 48 | 9 | 57 | 6.7 | 27 | 10 | 37 | 15.8 | 75 | 19 | 94 | 8.7 |
| 20-24 | 49 | 18 | 67 | 7.9 | 21 | 17 | 38 | 16.2 | 70 | 35 | 105 | 9.7 |
| 25-34 | 129 | 56 | 185 | 21.8 | 25 | 17 | 42 | 17.9 | 154 | 73 | 227 | 21.0 |
| 35-44 | 113 | 22 | 135 | 15.9 | 12 | 9 | 21 | 9.0 | 125 | 31 | 156 | 14.4 |
| 45-54 | 110 | 26 | 136 | 16.1 | 8 | 11 | 19 | 8.1 | 118 | 37 | 155 | 14.3 |
| 55-64 | 91 | 23 | 114 | 13.5 | 9 | 11 | 20 | 8.5 | 100 | 34 | 134 | 12.4 |
| 65-74 | 66 | 16 | 82 | 9.7 | 1 | 7 | 8 | 3.4 | 67 | 23 | 90 | 8.3 |
| 75 or Older | 48 | 22 | 70 | 8.3 | 3 | 16 | 19 | 8.1 | 51 | 38 | 89 | 8.2 |
| Unknown | 1 | 0 | 1 | 0.1 | 1 | 3 | 4 | 1.7 | 2 | 3 | 5 | 0.5 |
| TOTAL | 655 | 192 | 847 | 100.0 | 122 | 112 | 234 | 100.0 | 777 | 304 | 1,081 | 100.0 |

| AGE | PEDESTRIANS | | | | PEDALCYCLISTS | | | | TOTAL NON-OCCUPANT FATALITIES | | | |
|--------------|-------------|-----------|------------|--------------|---------------|----------|-----------|--------------|-------------------------------|-----------|------------|--------------|
| | Male | Female | Total | % | Male | Female | Total | % | Male | Female | Total | % |
| 4 or Younger | 1 | 2 | 3 | 1.4 | 0 | 0 | 0 | 0.0 | 1 | 2 | 3 | 1.2 |
| 5-9 | 2 | 1 | 3 | 1.4 | 1 | 0 | 1 | 2.9 | 3 | 1 | 4 | 1.6 |
| 10-14 | 2 | 1 | 3 | 1.4 | 2 | 0 | 2 | 5.7 | 4 | 1 | 5 | 2.0 |
| 15-19 | 5 | 1 | 6 | 2.8 | 1 | 0 | 1 | 2.9 | 6 | 1 | 7 | 2.8 |
| 20-24 | 10 | 4 | 14 | 6.5 | 1 | 0 | 1 | 2.9 | 11 | 4 | 15 | 6.0 |
| 25-34 | 24 | 4 | 28 | 13.1 | 5 | 0 | 5 | 14.3 | 29 | 4 | 33 | 13.3 |
| 35-44 | 22 | 10 | 32 | 15.0 | 0 | 0 | 0 | 0.0 | 22 | 10 | 32 | 12.9 |
| 45-54 | 22 | 14 | 36 | 16.8 | 5 | 0 | 5 | 14.3 | 27 | 14 | 41 | 16.5 |
| 55-64 | 29 | 12 | 41 | 19.2 | 11 | 1 | 12 | 34.3 | 40 | 13 | 53 | 21.3 |
| 65-74 | 20 | 8 | 28 | 13.1 | 5 | 0 | 5 | 14.3 | 25 | 8 | 33 | 13.3 |
| 75 or Older | 10 | 10 | 20 | 9.3 | 1 | 2 | 3 | 8.6 | 11 | 12 | 23 | 9.2 |
| Unknown | 0 | 0 | 0 | 0.0 | 0 | 0 | 0 | 0.0 | 0 | 0 | 0 | 0.0 |
| TOTAL | 147 | 67 | 214 | 100.0 | 32 | 3 | 35 | 100.0 | 179 | 70 | 249 | 100.0 |

Note: The totals above do not include 6 drivers, 2 passengers, and 1 pedestrian whose gender was unknown. An additional 2 occupants of non-motor vehicles were also killed.

Occupant: Any person who is part of a transport vehicle.

Non-Occupant: Any person who is part of a pedalcycle in transport (pedalcyclist) or any person who is not an occupant (pedestrian).

Drivers killed amount to 63.6% of all fatalities.

Passengers represent 17.6% of the total number of fatalities, an increase of 5.4% from 2020 to 2021.

Pedestrians account for 16% of all fatalities, representing a 22.9% increase from 2020 to 2021.

Pedalcyclists account for 2.6% of all fatalities, an increase of 25% from 2020 to 2021.

2021 Illinois Crash Facts & Statistics

Teen (16-19 Years Old) Fatalities by Age and Person Type

| AGE | PERSON TYPE | | | | OCCUPANT NON-MOTOR VEHICLE | TOTAL |
|--------------|-------------|-----------|------------|--------------|----------------------------------|-----------|
| | DRIVER | OCCUPANT | PEDESTRIAN | PEDALCYCLIST | | |
| 16 | 4 | 8 | 2 | 1 | 0 | 15 |
| 17 | 7 | 10 | 1 | 0 | 0 | 18 |
| 18 | 22 | 3 | 2 | 0 | 0 | 27 |
| 19 | 24 | 10 | 0 | 0 | 0 | 34 |
| TOTAL | 57 | 31 | 5 | 1 | 0 | 94 |

Teen (16-19 Years Old) A-Injuries by Age and Person Type

| AGE | PERSON TYPE | | | | OCCUPANT NON-MOTOR VEHICLE | TOTAL |
|--------------|-------------|------------|------------|--------------|----------------------------------|------------|
| | DRIVER | OCCUPANT | PEDESTRIAN | PEDALCYCLIST | | |
| 16 | 54 | 57 | 10 | 6 | 0 | 127 |
| 17 | 86 | 70 | 12 | 9 | 0 | 177 |
| 18 | 129 | 69 | 12 | 3 | 0 | 213 |
| 19 | 161 | 89 | 16 | 6 | 0 | 272 |
| TOTAL | 430 | 285 | 50 | 24 | 0 | 789 |

Pedestrian

| | | | |
|---|---------------|-------------------|-----------------|
| Pedestrians Injured | | | 3,520 |
| Pedestrians with A-Injuries | | | 861 |
| Pedestrians Killed | | | 215 |
| PERSONS KILLED AND INJURED IN PEDESTRIAN CRASHES BY TYPE OF ROAD* | | | |
| | Killed | A-Injuries | Injuries |
| Urban | | | |
| Freeway & Expressway/Toll | 2 | 3 | 4 |
| Interstate/Toll | 14 | 22 | 58 |
| Local Road or Street/Toll | 19 | 137 | 624 |
| Major Collector/Toll | 25 | 83 | 399 |
| Minor Arterial/Toll | 51 | 145 | 565 |
| Minor Collector | 5 | 9 | 43 |
| Other Principal Arterial/Toll | 77 | 135 | 447 |
| Unknown | 0 | 0 | 0 |
| Urban Total | 193 | 534 | 2,140 |
| Rural | | | |
| Freeway & Expressway | 0 | 0 | 0 |
| Interstate/Toll | 6 | 2 | 8 |
| Local Road or Street | 1 | 4 | 20 |
| Major Collector | 4 | 5 | 8 |
| Minor Arterial | 2 | 2 | 10 |
| Minor Collector | 0 | 1 | 1 |
| Other Principal Arterial | 5 | 5 | 7 |
| Unknown | 1 | 339 | 1,538 |
| Rural Total | 19 | 358 | 1,592 |

*There were 4 additional fatalities and 14 injuries, including 4 A-injuries, that occurred at unknown locations.

2021 Illinois Crash Facts & Statistics

Pedalcyclist

| | | | |
|--|---------------|-------------------|----------------|
| Pedalcyclists Injured | | | 2,140 |
| Pedalcyclists with A-Injuries | | | 302 |
| Pedalcyclists Killed | | | 35 |
| PERSONS KILLED AND INJURED IN PEDALCYCLE CRASHES BY TYPE OF ROAD* | | | |
| | Killed | A-Injuries | Injured |
| Urban | | | |
| Freeway & Expressway/Toll | 1 | 0 | 0 |
| Interstate/Toll | 0 | 0 | 4 |
| Local Road or Street/Toll | 5 | 52 | 457 |
| Major Collector/Toll | 7 | 48 | 302 |
| Minor Arterial/Toll | 9 | 50 | 352 |
| Minor Collector | 0 | 7 | 41 |
| Other Principal Arterial/Toll | 13 | 36 | 254 |
| Unknown | 0 | 0 | 0 |
| Urban Total | 35 | 193 | 1,410 |
| Rural | | | |
| Freeway & Expressway | 0 | 0 | 0 |
| Interstate/Toll | 0 | 0 | 0 |
| Local Road or Street | 0 | 5 | 13 |
| Major Collector | 0 | 1 | 4 |
| Minor Arterial | 0 | 1 | 5 |
| Minor Collector | 0 | 0 | 1 |
| Other Principal Arterial | 0 | 3 | 6 |
| Unknown | 1 | 100 | 749 |
| Rural Total | 1 | 110 | 778 |

*There were an additional 2 injuries that occurred at unknown locations.

Motorcyclist

| | | | | |
|---|---------------|-------------------|-----------------|--------------|
| Motorcyclists Injured | | | | 2,544 |
| Motorcyclists with A-Injuries | | | | 905 |
| Motorcyclists Killed | | | | 174 |
| Non-Motorcyclists Killed | | | | 4 |
| PEOPLE KILLED AND INJURED IN MOTORCYCLE CRASHES BY TYPE OF ROAD* | | | | |
| | Killed | A-Injuries | Injuries | |
| Urban | | | | |
| Freeway & Expressway/Toll | 2 | 7 | | 19 |
| Interstate/Toll | 9 | 53 | | 171 |
| Local Road or Street/Toll | 14 | 114 | | 320 |
| Major Collector/Toll | 21 | 79 | | 232 |
| Minor Arterial/Toll | 38 | 131 | | 376 |
| Minor Collector | 2 | 11 | | 39 |
| Other Principal Arterial/Toll | 41 | 159 | | 528 |
| Unknown | 0 | 0 | | 0 |
| Urban Total | 127 | 554 | | 1,685 |
| Rural | | | | |
| Freeway & Expressway | 0 | 0 | | 0 |
| Interstate/Toll | 0 | 8 | | 14 |
| Local Road or Street | 4 | 36 | | 81 |
| Major Collector | 21 | 56 | | 143 |
| Minor Arterial | 12 | 59 | | 133 |
| Minor Collector | 3 | 6 | | 17 |
| Other Principal Arterial | 11 | 22 | | 65 |
| Unknown | 0 | 185 | | 598 |
| Rural Total | 51 | 372 | | 1,051 |

*There were an additional 8 injuries, including 3 A-injuries, that occurred at unknown locations.

2021 Illinois Crash Facts & Statistics

Occupant Restraint Usage for People Killed and Injured*

| TYPE OF RESTRAINT | DRIVER | | | PASSENGER | | |
|---------------------------------|------------|--------------|---------------|------------|--------------|---------------|
| | Fatal | A-Injury | Injury | Fatal | A-Injury | Injury |
| None Used/Not Applicable | 245 | 580 | 2,299 | 89 | 304 | 1,188 |
| Shoulder and Lap Belt Used | 261 | 3,400 | 42,121 | 61 | 976 | 13,730 |
| Child Restraint Used Improperly | 0 | 0 | 0 | 0 | 5 | 42 |
| Child Restraint – Rear | 0 | 0 | 0 | 2 | 4 | 241 |
| Child Restraint – Forward | 0 | 0 | 0 | 0 | 31 | 584 |
| Child Restraint – Used | 0 | 0 | 0 | 0 | 0 | 0 |
| Child Restraint – Unknown | 0 | 0 | 0 | 1 | 5 | 194 |
| Child Restraint – Not Used | 0 | 0 | 0 | 6 | 15 | 117 |
| Booster Seat | 0 | 0 | 0 | 1 | 13 | 202 |
| Stretcher | 0 | 0 | 0 | 0 | 0 | 2 |
| Wheelchair | 0 | 0 | 0 | 1 | 0 | 8 |
| Unknown | 163 | 1,209 | 10,351 | 56 | 549 | 4,381 |
| TOTAL | 669 | 5,189 | 54,771 | 217 | 1,902 | 20,689 |

Occupant Restraint Usage for People with A-Injuries by Age*

| TYPE OF RESTRAINT | AGE GROUPS | | | | | | |
|---------------------------------|------------|-----------|-----------|------------|------------|--------------|------------|
| | 0-3 | 4-5 | 6-9 | 10-14 | 15-20 | 21 or Older | Unknown |
| None Used/Not Applicable | 4 | 1 | 12 | 18 | 158 | 678 | 13 |
| Shoulder and Lap Belt Used | 9 | 10 | 29 | 53 | 505 | 3,697 | 73 |
| Child Restraint Used Improperly | 4 | 1 | 0 | 0 | 0 | 0 | 0 |
| Child Restraint – Rear | 4 | 0 | 0 | 0 | 0 | 0 | 0 |
| Child Restraint – Forward | 12 | 12 | 3 | 0 | 0 | 2 | 2 |
| Child Restraint – Unknown | 4 | 0 | 0 | 0 | 0 | 0 | 1 |
| Child Restraint – Not Used | 5 | 6 | 4 | 0 | 0 | 0 | 0 |
| Booster Seat | 2 | 1 | 9 | 0 | 0 | 1 | 0 |
| Unknown | 11 | 8 | 16 | 29 | 245 | 1,348 | 101 |
| TOTAL | 55 | 39 | 73 | 100 | 908 | 5,726 | 190 |

*Excludes buses, motorcycles and miscellaneous vehicles.

Alcohol Data

The data referenced in this section are motor vehicle crashes occurring on Illinois public roadways in which at least one driver involved in the crash, either surviving or deceased, tested positive for alcohol.

2021 Illinois Crash Facts & Statistics

Alcohol-Related Fatal Crash Data Overview

- ✚ 1,217 fatal crashes occurred in 2021; 22.2% of these crashes involved alcohol.
- ✚ 1,341 people were killed in motor vehicle crashes.
- ✚ 853 drivers were killed in motor vehicle crashes. Of these drivers, 544 were tested for BAC and 42.3% tested positive with a BAC of 0.01 or greater.
- ✚ 215 pedestrians were killed in 2021. Of those, 81 were tested for BAC and 38.3% tested positive with a BAC of 0.01 or greater.
- ✚ 35 pedalcyclists were fatally injured in motor vehicle crashes. Of those, 11 were tested for BAC and 18.2% had a positive BAC of 0.01 or greater.
- ✚ Motorcycle operators accounted for 12.2% of the fatalities. Of those, 104 were tested for BAC and 43.3% tested positive with a BAC of 0.01 or greater.
- ✚ Teen drivers accounted for 4.3% of the overall fatalities. Of those, 38 were tested for BAC and 13.2% tested positive with a BAC of 0.01 or greater.

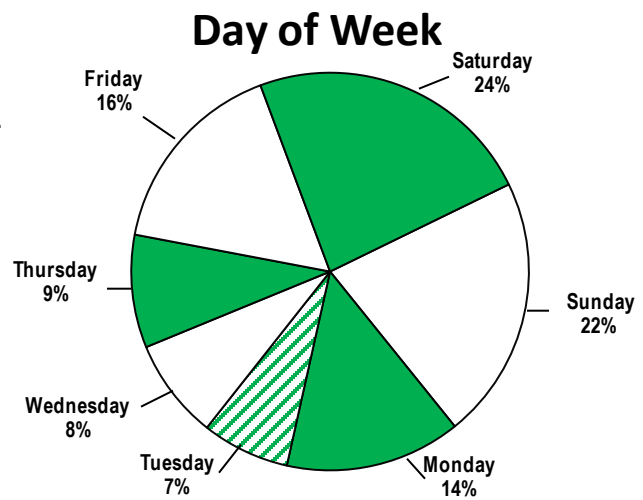
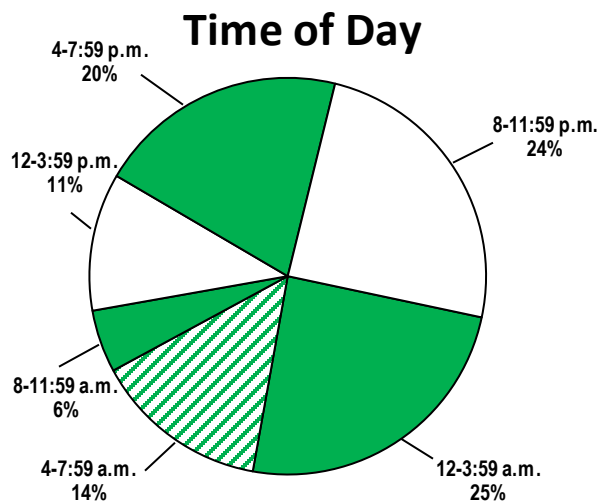
2021 Illinois Crash Facts & Statistics

Drivers Killed by Age and BAC

| AGE | BAC TEST RESULTS | | | | TOTAL TESTED | NOT TESTED OR UNKNOWN IF TESTED | TOTAL KILLED |
|--------------|------------------|-----------|-----------|-----------|--------------|---------------------------------|--------------|
| | 0.00 | 0.01-0.07 | 0.08-0.20 | Over 0.20 | | | |
| 16-20 | 38 | 3 | 5 | 0 | 46 | 33 | 79 |
| 21-24 | 18 | 3 | 6 | 4 | 31 | 14 | 45 |
| 25-34 | 48 | 7 | 33 | 30 | 118 | 69 | 187 |
| 35-44 | 42 | 3 | 21 | 21 | 87 | 50 | 137 |
| 45-54 | 46 | 9 | 15 | 19 | 89 | 48 | 137 |
| 55-64 | 51 | 3 | 14 | 10 | 78 | 36 | 114 |
| 65-74 | 34 | 10 | 2 | 8 | 54 | 28 | 82 |
| 75 or Older | 37 | 2 | 1 | 1 | 41 | 30 | 71 |
| Unknown | 0 | 0 | 0 | 0 | 0 | 1 | 1 |
| TOTAL | 314 | 40 | 97 | 93 | 544 | 309 | 853 |

Fatal Alcohol-Related Crashes by Time of Day and Day of Week

Fatal alcohol-related crashes are fatal crashes in which at least one driver (surviving or deceased) had a Blood Alcohol Concentration of 0.01 or greater.



2021 Illinois Crash Facts & Statistics

Fatal Crashes During the Holidays Total and Alcohol-Related*

| HOLIDAY PERIODS | NUMBER OF DAYS | FATAL CRASHES | | FATALITIES | |
|---|----------------|------------------|----------------|------------------|----------------|
| | | Alcohol-Related* | Total | Alcohol-Related* | Total |
| Memorial Day | | | | | |
| 6 p.m. on 05/28/2021- 11:59 p.m. on 05/31/2021 | 3.25 | 2 | of 11 18.2% | 3 | of 14 21.4% |
| Fourth of July | | | | | |
| 6 p.m. on 07/02/2021- 11:59 p.m. on 07/05/2021 | 3.25 | 6 | of 20 30.0% | 7 | of 21 33.3% |
| Labor Day | | | | | |
| 6 p.m. on 09/03/2021- 11:59 p.m. on 09/06/2021 | 3.25 | 1 | of 15 6.7% | 1 | of 18 5.6% |
| Thanksgiving | | | | | |
| 6 p.m. on 11/24/2021- 11:59 p.m. on 11/28/2021 | 4.25 | 2 | of 10 20.0% | 2 | of 10 20.0% |
| Christmas | | | | | |
| 6 p.m. on 12/23/2021- 11:59 p.m. on 12/26/2021 | 3.25 | 1 | of 9 11.1% | 1 | of 9 11.1% |
| New Year's | | | | | |
| 6 p.m. on 12/30/2021- 11:59 p.m. on 01/02/2022 | 3.25 | 0 | of 15 0.0% | 0 | of 19 0.0% |

*Fatal crashes or fatalities resulting from crashes in which at least one driver (surviving or deceased) had a Blood Alcohol Concentration of 0.01 or greater.

2021 Illinois Crash Facts & Statistics

Pedestrians and Pedalcyclists Killed by Age and BAC

| AGE | BAC TEST RESULTS | | | | Not Tested Or Unknown If Tested | Total |
|----------------------|------------------|-----------|-----------|-----------|---------------------------------------|------------|
| | 0.00 | 0.01-0.07 | 0.08-0.20 | Over 0.20 | | |
| Pedestrians | | | | | | |
| 4 or Younger | 1 | 0 | 0 | 0 | 2 | 3 |
| 5-9 | 0 | 0 | 0 | 0 | 3 | 3 |
| 10-15 | 0 | 0 | 0 | 0 | 4 | 4 |
| 16-20 | 3 | 0 | 0 | 0 | 3 | 6 |
| 21-24 | 8 | 0 | 2 | 1 | 2 | 13 |
| 25-34 | 10 | 0 | 3 | 2 | 13 | 28 |
| 35-44 | 6 | 0 | 4 | 3 | 19 | 32 |
| 45-54 | 8 | 0 | 1 | 4 | 23 | 36 |
| 55-64 | 2 | 4 | 2 | 3 | 30 | 41 |
| 65-74 | 9 | 0 | 1 | 1 | 17 | 28 |
| 75 or Older | 3 | 0 | 0 | 0 | 17 | 20 |
| Unknown | 0 | 0 | 0 | 0 | 1 | 1 |
| TOTAL | 50 | 4 | 13 | 14 | 134 | 215 |
| Pedalcyclists | | | | | | |
| 4 or Younger | 0 | 0 | 0 | 0 | 0 | 0 |
| 5-9 | 0 | 0 | 0 | 0 | 1 | 1 |
| 10-15 | 2 | 0 | 0 | 0 | 0 | 2 |
| 16-20 | 0 | 0 | 0 | 0 | 1 | 1 |
| 21-24 | 0 | 0 | 0 | 0 | 1 | 1 |
| 25-34 | 1 | 0 | 0 | 1 | 3 | 5 |
| 35-44 | 0 | 0 | 0 | 0 | 0 | 0 |
| 45-54 | 1 | 0 | 0 | 0 | 4 | 5 |
| 55-64 | 4 | 0 | 0 | 0 | 8 | 12 |
| 65-74 | 0 | 0 | 0 | 0 | 5 | 5 |
| 75 or Older | 1 | 1 | 0 | 0 | 1 | 3 |
| TOTAL | 9 | 1 | 0 | 1 | 24 | 35 |

Vehicle Data

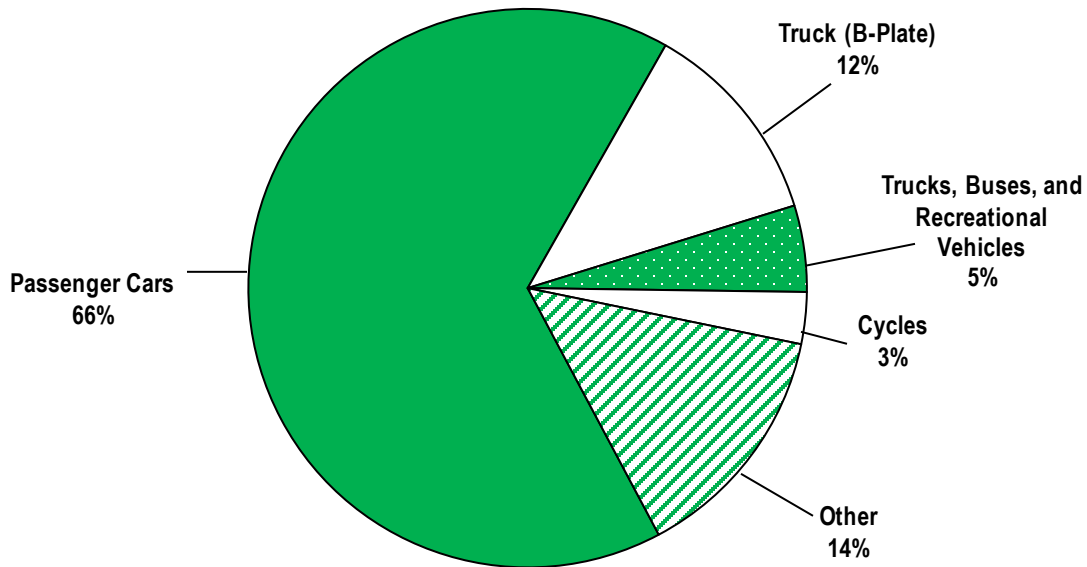
The data reflected in this section are crashes involving a specific vehicle type, including all vehicles involved in the crash as well as persons in those vehicles.

Vehicle Data Overview

- ✚ There were 3,274 motorcycle crashes in 2021.
- ✚ The number of motorcyclists killed increased by 14.5% from 2020.
- ✚ Motorcyclists injured increased by 5.8% from 2020.
- ✚ There were 11,178 crashes involving tractor-trailers in 2021.
- ✚ Fatalities resulting from tractor-trailer crashes decreased by 0.8% from 2020.
- ✚ There were 706 crashes involving school buses in 2021.
- ✚ No school-age passengers on a school bus were killed in 2021, but 65 were injured.
- ✚ No school bus drivers were killed in 2021, but 23 were injured.

2021 Illinois Crash Facts & Statistics

Registered Motor Vehicles By Type



Motor Vehicles Involved in Crashes

| TYPE OF MOTOR VEHICLE | CRASH SEVERITY | | | VEHICLE OCCUPANTS | |
|---------------------------------|----------------|--------|---------|-------------------|----------|
| | Fatal | Injury | Total | Killed | A-Injury |
| Passenger Car | 953 | 69,520 | 325,335 | 578 | 4,663 |
| Pickup Truck | 194 | 8,418 | 41,761 | 96 | 634 |
| SUV | 328 | 21,582 | 99,473 | 159 | 1,335 |
| Van | 76 | 5,508 | 25,389 | 30 | 318 |
| Other Single Unit Truck | 50 | 1,447 | 9,261 | 8 | 62 |
| Truck-Tractor with Semi-Trailer | 117 | 1,946 | 12,040 | 15 | 69 |
| Farm Tractor/Farm Equipment | 6 | 70 | 267 | 3 | 7 |
| School Bus | 2 | 100 | 714 | 0 | 7 |
| Other Bus | 6 | 476 | 2,474 | 1 | 26 |
| Motorcycle | 181 | 2,443 | 3,370 | 174 | 905 |
| Other or Unknown | 89 | 3,966 | 38,967 | 25 | 223 |

Tractor-Trailer Crashes

There were 11,178 crashes involving tractor-trailers in Illinois in 2021. Tractor-trailer crashes account for 3.8% of total crashes.

Fatalities resulting from tractor-trailer crashes decreased by 0.8% from 2020 to 2021. The number of fatal crashes also decreased by 1.9%.

Injury crashes involving tractor-trailers account for 3% of all injury crashes. A-injuries account for 14.6% of all injuries in tractor-trailer crashes.

| | |
|--|--------|
| Total Crashes | 11,178 |
| Fatal Crashes | 103 |
| Injury Crashes | 1,817 |
| A-Injury Crashes | 292 |
| Property Damage Crashes | 9,258 |
| Vehicle Miles Traveled (Millions) | 12,765 |

PEOPLE KILLED AND INJURED BY PERSON TYPE

| PERSON TYPE | Killed | A-Injury |
|-------------------------------|------------|------------|
| Tractor-Trailer Occupants | 15 | 69 |
| Other Vehicle Occupants | 97 | 284 |
| Pedestrians | 5 | 7 |
| Pedalcyclists | 1 | 1 |
| Occupant of Non-Motor Vehicle | 0 | 0 |
| TOTAL | 118 | 361 |

CRASHES BY TYPE OF ROAD BY CRASH SEVERITY*

| TYPE OF ROAD | CRASH SEVERITY | |
|-------------------------------|----------------|------------|
| | Fatal | A-Injury |
| URBAN | | |
| Freeway & Expressway/Toll | 0 | 1 |
| Interstate/Toll | 28 | 75 |
| Local Road or Street/Toll | 1 | 2 |
| Major Collector/Toll | 8 | 11 |
| Minor Arterial/Toll | 6 | 18 |
| Minor Collector | 0 | 0 |
| Other Principal Arterial/Toll | 15 | 37 |
| Unknown | 0 | 0 |
| Urban Total | 58 | 144 |
| RURAL | | |
| Freeway & Expressway/Toll | 0 | 0 |
| Interstate/Toll | 18 | 58 |
| Local Road or Street | 0 | 5 |
| Major Collector | 7 | 9 |
| Minor Arterial | 11 | 23 |
| Minor Collector | 0 | 0 |
| Other Principal Arterial | 9 | 19 |
| Unknown | 0 | 32 |
| Rural Total | 45 | 146 |

*There were 2 additional A-injury crashes that occurred in unknown locations.

School Bus Crashes

In 2021, there were 706 school bus crashes. These crashes account for less than 1% of the total crashes for the year.

Injury crashes involving school buses increased by 50%, from 66 in 2020 to 99 in 2021. The number of injuries also increased by 50.4%. A-injuries account for 11.2% of these injuries.

| | |
|--------------------------------|-----|
| Total Crashes | 706 |
| Fatal Crashes | 2 |
| Injury Crashes | 99 |
| A-Injury Crashes | 13 |
| Property Damage Crashes | 605 |
| Urban Crashes | 438 |
| Rural Crashes | 265 |

3 crashes occurred in unknown locations.

PEOPLE KILLED AND INJURED BY PERSON TYPE

| PERSON TYPE | Killed | A-Injury |
|-------------------------------------|----------|-----------|
| School Bus Drivers | 0 | 3 |
| School Bus Passengers (School-Age)* | 0 | 4 |
| Other School Bus Passengers | 0 | 0 |
| Other Vehicle Occupants | 2 | 13 |
| Pedestrians (School-Age)* | 0 | 0 |
| Other Pedestrians | 0 | 0 |
| Pedalcyclists | 0 | 1 |
| Occupants of Non-Motor Vehicles | 0 | 0 |
| TOTAL | 2 | 21 |

*School-Age = Children 5-19 years of age.

School Bus = Type 1 or Type 2.

CRASHES BY TYPE OF ROAD BY CRASH SEVERITY

| TYPE OF ROAD | CRASH SEVERITY | |
|--------------------------|----------------|----------|
| | Fatal | A-Injury |
| URBAN | | |
| Interstate /Toll | 0 | 0 |
| Local Road or Street | 0 | 2 |
| Major Collector | 1 | 3 |
| Minor Arterial | 1 | 1 |
| Other Principal Arterial | 0 | 1 |
| Unknown | 0 | 0 |
| Urban Total | 2 | 7 |
| RURAL | | |
| Interstate | 0 | 0 |
| Local Road or Street | 0 | 1 |
| Major Collector | 0 | 1 |
| Minor Arterial | 0 | 1 |
| Other Principal Arterial | 0 | 0 |
| Unknown | 0 | 3 |
| Rural Total | 0 | 6 |

Motorcycle

Motorcycle crashes accounted for 1.1% of all crashes in 2021. The number of motorcyclists killed increased by 14.5%, from 152 in 2020 to 174 in 2021. These motorcycle fatalities accounted for 13% of all fatalities in 2021. The number of motorcyclists injured – 2,544 – increased by 5.8% in 2021.

The figures below include motorcycles, motor scooters, motorbikes, mopeds and 3-wheeled motorcycles.

| | |
|--|-------|
| Total Crashes | 3,274 |
| Fatal Crashes | 168 |
| Injury Crashes | 2,380 |
| A-Injury Crashes | 849 |
| Motorcyclists Killed | 174 |
| Motorcyclists Injured | 2,544 |
| Motorcyclists with A-Injuries | 905 |
| Non-Motorcyclists Killed | 4 |
| Non-Motorcyclists Injured | 200 |
| Non-Motorcyclists with A-Injuries | 24 |

MOTORCYCLES INVOLVED IN CRASHES BY TYPE OF MANEUVER

| Motorcycle Maneuver | Motorcycles Involved |
|-------------------------|----------------------|
| Going Straight Ahead | 1,903 |
| Passing/Overtaking | 97 |
| Making Left Turn | 166 |
| Making Right Turn | 113 |
| Slow/Stopped in Traffic | 169 |
| Skidding/Control Loss | 346 |
| Changing Lanes | 46 |
| Other | 339 |
| Parked | 108 |
| Disabled | 1 |
| Unknown | 82 |
| TOTAL | 3,370 |